

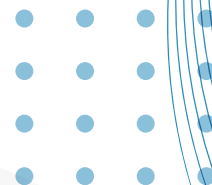
| Catalogue 2024



**alaflex**  
*Simply Flexible*

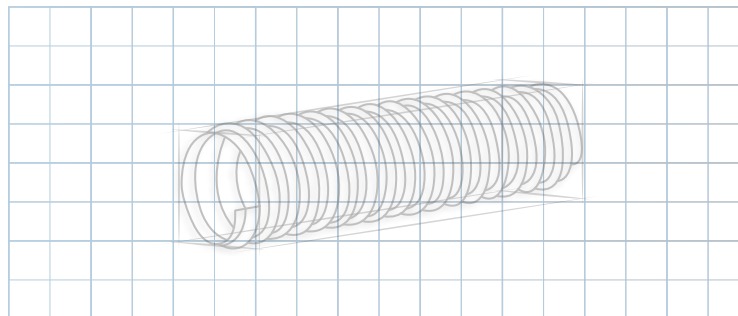
---

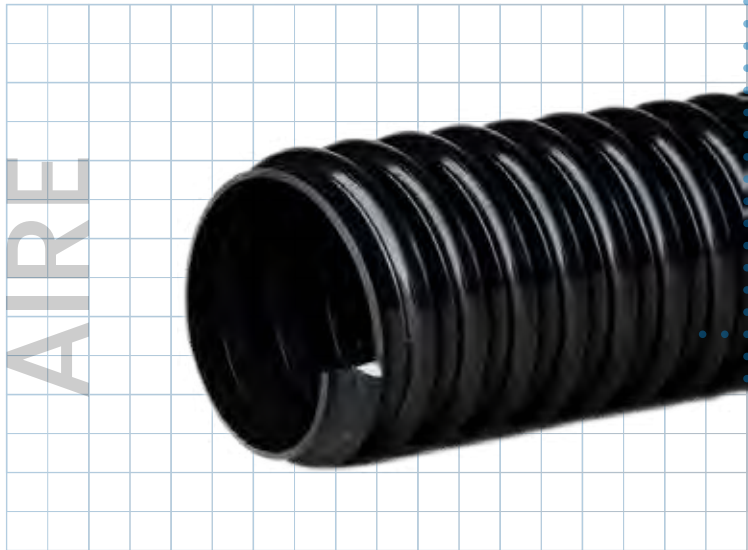
High technology in flexible hoses



# LIST OF PRODUCTS

Code	Product	Code	Product
AL01	AIRE	AL32	HEAVY DUTY CRISTAL ATÓXICO
AL02	AIRE ATÓXICO	AL33	HEAVY DUTY CRISTAL CON ANTIESTÁTICO ATÓXICO
AL03	AIRE UL	AL34	HIDROTEC
AL04	AIRE ACEITE	AL35	HOSPITAL ATÓXICO
AL05	AIRE LIGHT	AL36	JARDÍN
AL06	AIRE PESADO	AL37	MINAS
AL07	AIRE PESADO ATÓXICO	AL38	RURAL NORMAL VERDE
AL08	AIRE PESADO HIGH FLEX	AL39	RURAL NORMAL ATÓXICO
AL09	AIRE PESADO LOW TEMP	AL40	RURAL NORMAL NARANJA
AL10	ALAPPOOL	AL41	RURAL NORMAL AMARILLO
AL11	ALAPPOOL LIGHT	AL42	RURAL RUDO
AL12	ALAPPOOL BICAPA	AL43	SUCTION CON ANTIESTÁTICO ATÓXICO
AL13	ALIMENTOS	AL44	SUCTION CON ACERO ATÓXICO
AL14	ALIMENTOS CON ANTIESTÁTICO	AL45	SUPER SUCTION CORPORATION
AL15	ALIMENTOS PLUS	AL46	SUCTION LOW TEMP
AL16	ASPIRADORA	AL47	TRANSMETAL PARA COMBUSTIBLES
AL17	ASPIRADORA BICAPA	AL48	ALATHANE DUCTING ATÓXICO
AL18	ASPIRADORA PVC	AL49	POLYURETHANE CLEAR TRANSMETAL
AL19	COMBUSTIBLE	AL50	POLYURETHANE SUCTION HOSE
AL20	COMBUSTIBLE CON ANTIESTÁTICO	AL51	FOOD AND GRADE POLYURETHANE
AL21	DREN	AL52	FOOD AND GRADE POLYURETHANE CON ANTIESTÁTICO
AL22	DUCTO	AL53	POLYURETHANE LINED
AL23	DUCTO ATÓXICO	AL54	VINIL
AL24	ELÉCTRICO LIQUID TIGHT UL	AL55	NIVEL
AL25	ELÉCTRICO LIQUID TIGHT	AL56	INDUSTRIAL
AL26	ELÉCTRICO NORMAL	AL57	INDUSTRIAL ATÓXICA
AL27	ELÉCTRICO UL	AL58	INDUSTRIAL TRAMADA
AL28	ENOFLEX	AL59	INDUSTRIAL TRAMADA ATÓXICA
AL29	ESTRUCTURAL	AL60	JARDIN TRAMADA
AL30	FIBRA ÓPTICA	AL61	PLANA
AL31	FIBRA ÓPTICA LIGERA	AL62	CONECTORES





**AIRE**

Code: AL01  
Line Color: Black

Tolerance: +/- 3%

Specifications and product presentations are subject to change without prior notice.

## Normative references

(\*) **RoHS Directive 2015/863 / EU**

(\*) **REACH 2023/SVHC 233**

(\*) If the product is required to comply with **ROSH** and/or **REACH** standards, consult with the seller (Only applicable in BLACK presentation).

## Characteristics

Light and flexible hose made of plasticized PVC and reinforced with rigid shockproof PVC, which makes it highly flexible. Resistant to the action of atmospheric agents and numerous chemicals, with excellent insulating properties.

## Application

- Aspiration and impulsion of: air, smoke, sawdust, shavings, textile fibers, and powders
- For ducts, ventilation, and gas elimination
- Movement and drainage of water from small fountains and artificial lakes
- Cable covering
- Particularly indicated for mobile installations

## Technical Information

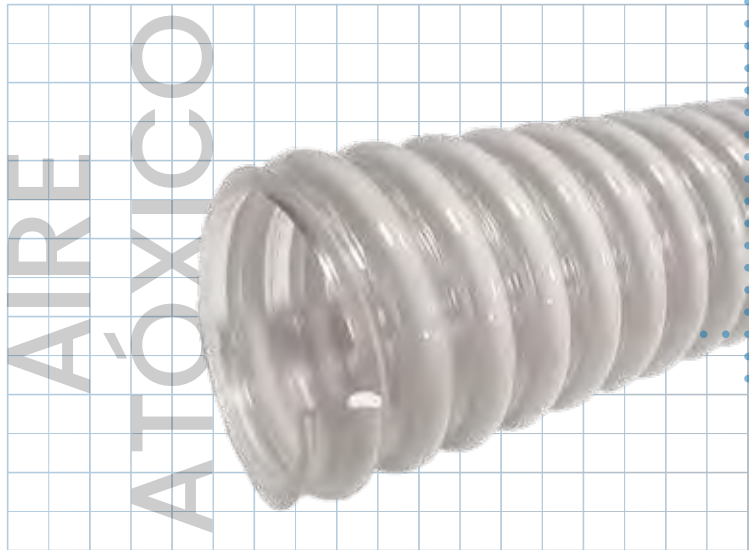
**Internal surface smooth and external surface corrugated:** extremely flexible.

**Working temperature:**  
from 14°F to 122°F

**Bending radius**  
1 times its inner diameter

**Vacuum pressure**  
0.4 to 0.5 ATM = from 12 to 15 in Hg

Product Code	Commercial Size in	Interior Diameter mm	Length	
			m	ft
AL01NEG051603000	5/16	7.9	15 / 30	50 / 100
AL01NEG001203000	1/2	12.7	15 / 30	50 / 100
AL01NEG005803000	5/8	15.9	15 / 30	50 / 100
AL01NEG003403000	3/4	19.1	15 / 30	50 / 100
AL01NEG007803000	7/8	22.2	15 / 30	50 / 100
AL01NEG010003000	1	25.4	15 / 30	50 / 100
AL01NEG011403000	1 1/4	31.8	15 / 30	50 / 100
AL01NEG011203000	1 1/2	38.1	15 / 30	50 / 100
AL01NEG013403000	1 3/4	44.5	15 / 30	50 / 100
AL01NEG020003000	2	50.8	15 / 30	50 / 100
AL01NEG021203000	2 1/2	63.5	15 / 30	50 / 100
AL01NEG030003000	3	76.2	15 / 30	50 / 100
AL01NEG031203000	3 1/2	88.9	15 / 30	50 / 100
AL01NEG040003000	4	101.6	15 / 30	50 / 100
AL01NEG050002000	5	127.0	10 / 20	20 / 25
AL01NEG060002000	6	152.4	10 / 20	20 / 25
AL01NEG080002000	8	203.2	10 / 20	20 / 25
AL01NEG100002000	10	254.0	10 / 20	20 / 25



## AIRE ATÓXICO

Code: AL02  
Line Color: Crystal with white spiral

Tolerance: +/- 3%  
Specifications and product presentations are subject to change without prior notice.

### Characteristics

Light and flexible hose made of plasticized PVC and reinforced with rigid shockproof PVC, which makes it highly flexible. Resistant to the action of atmospheric agents and numerous chemicals, with excellent insulating properties. It does not transmit odor or taste.

### Application

- Ventilation ducts
- Ventilation systems in hospitals, offices, and clean rooms.
- Air ducts and blowers in processes requiring non-toxic grade.
- Transfer of pharmaceutical products

### Normative references

**FDA** - Code of Federal Regulations  
**(CFR)** title 21, parts 175.300,177.1210 and 178.2010

## Technical Information

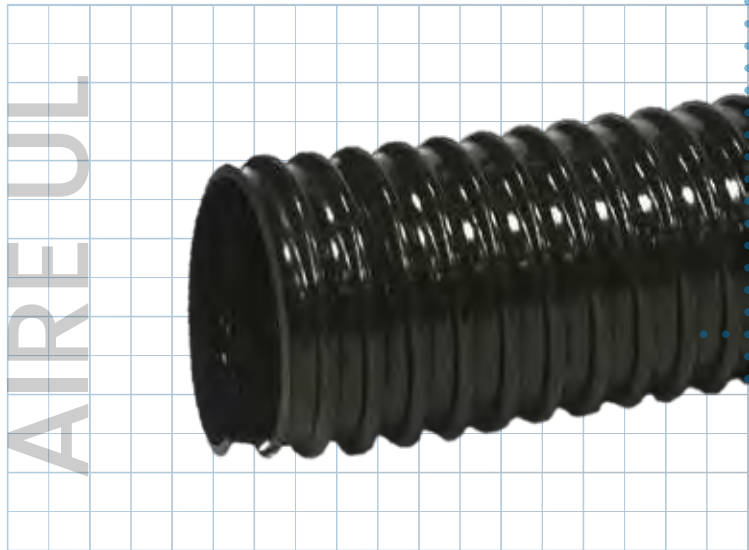
**Internal surface smooth and external surface corrugated:** highly flexible.

**Working temperature:**  
from 14°F to 122°F

**Bending radius**  
1 times its inner diameter

**Vacuum pressure**  
0.4 to 0.5 ATM = From 12 to 15 in Hg

Product Code	Commercial Size		Interior Diameter		Length	
	in	mm	m	ft		
AL02CEB051603000	5/16	7.9	15 / 30	50 / 100		
AL02CEB001203000	1/2	12.7	15 / 30	50 / 100		
AL02CEB005803000	5/8	15.9	15 / 30	50 / 100		
AL02CEB003403000	3/4	19.1	15 / 30	50 / 100		
AL02CEB007803000	7/8	22.2	15 / 30	50 / 100		
AL02CEB010003000	1	25.4	15 / 30	50 / 100		
AL02CEB011403000	1 1/4	31.8	15 / 30	50 / 100		
AL02CEB011203000	1 1/2	38.1	15 / 30	50 / 100		
AL02CEB013403000	1 3/4	44.5	15 / 30	50 / 100		
AL02CEB020003000	2	50.8	15 / 30	50 / 100		
AL02CEB021203000	2 1/2	63.5	15 / 30	50 / 100		
AL02CEB030003000	3	76.2	15 / 30	50 / 100		
AL02CEB031203000	3 1/2	88.9	15 / 30	50 / 100		
AL02CEB040003000	4	101.6	15 / 30	50 / 100		
AL02CEB050002000	5	127.0	10 / 20	20 / 25		
AL02CEB060002000	6	152.4	10 / 20	20 / 25		
AL02CEB080002000	8	203.2	10 / 20	20 / 25		
AL02CEB100002000	10	254.0	10 / 20	20 / 25		



## AIRE UL

Code: AL03  
Line Color: Black

Tolerance: +/- 3%  
Specifications and product presentations are subject to change without prior notice.

### Normative references

Internal and external diameters comply with UL 1660 standard.

(\*) **RoHS Directive 2015/863 / EU**

(\*) **REACH 2023/SVHC 233**

(\*) If you require the product to meet **ROSH** and/or **REACH** standards, please consult the seller.

### Characteristics

Lightweight and flexible hose made of plasticized PVC and reinforced with rigid, shock-resistant PVC, making it highly flexible. It is resistant to atmospheric agents and many chemical products.

### Application

- Suction and conveying of: air, fumes, sawdust, shavings, textile fibers, and dust
- For ducts, ventilation, and gas removal
- Movement and drainage of water from small fountains and artificial ponds
- Cable covering
- Particularly suited for mobile installations

## Technical Information

**Internal surface smooth and external surface corrugated:** extremely flexible.

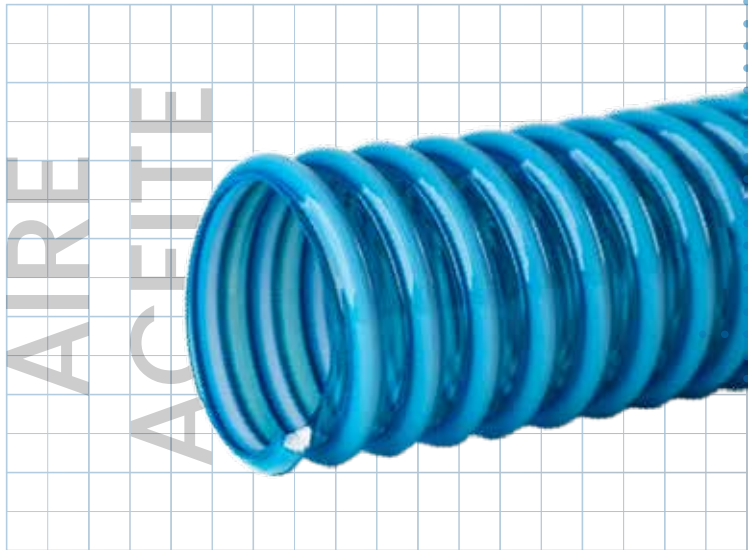
**Working temperature:**  
from 14°F to 122°F

**Bending radius**  
1 times its interior diameter.

**Vacuum pressure**  
0.4 to 0.5 ATM = 12 to 15 in Hg.

Product Code	Commercial	Interior		External		Length	
	Size in	Diameter mm min	Diameter mm max	Diameter mm min	Diameter mm max	m	ft
AL03NEG003803048	3/8	12.3	12.8	17.5	18.0	15.24 / 30.48	50 / 100
AL03NEG001203048	1/2	15.8	16.3	20.8	21.3	15.24 / 30.48	50 / 100
AL03NEG003403048	3/4	20.8	21.3	26.2	26.7	15.24 / 30.48	50 / 100
AL03NEG010003048	1	26.4	27.1	32.8	33.4	15.24 / 30.48	50 / 100
AL03NEG011403048	1 1/4	35.1	35.8	41.4	42.2	15.24 / 30.48	50 / 100
AL03NEG011203048	1 1/2	40.0	40.6	47.4	48.3	15.24 / 30.48	50 / 100
AL03NEG020003048	2	51.3	51.9	59.4	60.3	15.24 / 30.48	50 / 100
AL03NEG030003048	3	77.9	79.7	87.8	88.9	15.24 / 30.48	50 / 100
AL03NEG040003048	4	101.6	103.0	112.7	113.8	15.24 / 30.48	50 / 100





Tolerance: +/- 3%

Specifications and product presentations are subject to change without prior notice.

## AIRE ACEITE

Code: AL04

Line Color: Crystal blue with white spiral

### Characteristics

Lightweight and flexible hose made from plasticized PVC and reinforced with rigid, shock-resistant PVC, making it highly flexible. It is resistant to atmospheric agents and numerous chemicals, with excellent insulating properties.

### Application

- Suction of fuel vapors
- Transfer of mineral oils
- Transfer of vegetable oils
- Transfer of low-pressure fuels

## Technical Information

**Internal surface smooth and external surface corrugated:** extremely flexible.

#### Bending radius

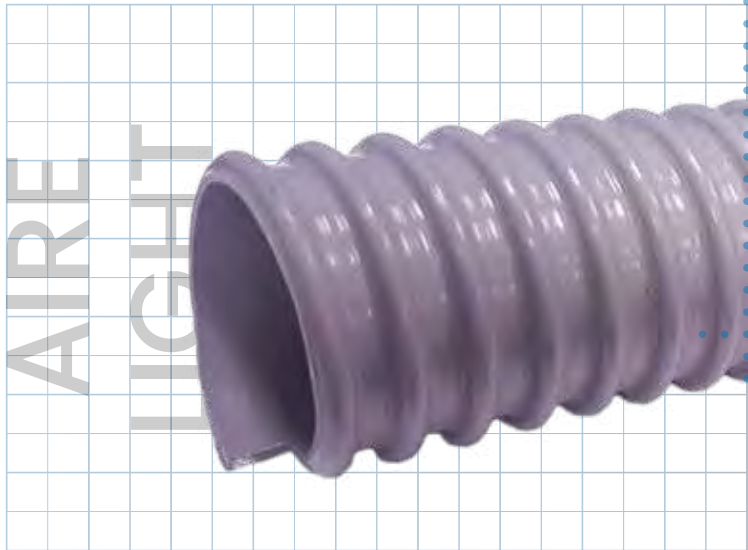
1 times its interior diameter.

**Working temperature:**  
from 14°F to 140°F

#### Vacuum pressure

0.4 to 0.5 ATM = 12 to 15 in Hg.

Product Code	Commercial Size in	Interior Diameter mm	Length	
			m	ft
AL04CZB051603000	5/16	7.9	15 / 30	50 / 100
AL04CZB001203000	1/2	12.7	15 / 30	50 / 100
AL04CZB005803000	5/8	15.9	15 / 30	50 / 100
AL04CZB003403000	3/4	19.1	15 / 30	50 / 100
AL04CZB007803000	7/8	22.2	15 / 30	50 / 100
AL04CZB010003000	1	25.4	15 / 30	50 / 100
AL04CZB011403000	1 1/4	31.8	15 / 30	50 / 100
AL04CZB011203000	1 1/2	38.1	15 / 30	50 / 100
AL04CZB013403000	1 3/4	44.5	15 / 30	50 / 100
AL04CZB020003000	2	50.8	15 / 30	50 / 100
AL04CZB021203000	2 1/2	63.5	15 / 30	50 / 100
AL04CZB030003000	3	76.2	15 / 30	50 / 100
AL04CZB031203000	3 1/2	88.9	15 / 30	50 / 100
AL04CZB040003000	4	101.6	15 / 30	50 / 100
AL04CZB050002000	5	127.0	10 / 20	20 / 25
AL04CZB060002000	6	152.4	10 / 20	20 / 25
AL04CZB080002000	8	203.2	10 / 20	20 / 25
AL04CZB100002000	10	254.0	10 / 20	20 / 25



## AIRE LIGHT

Code: AL05  
Line Color: Gray

Tolerance: +/- 3%  
Specifications and product presentations are subject to change without prior notice.

### Characteristics

Extremely lightweight and flexible hose made from plasticized PVC and reinforced with rigid, shock-resistant PVC. It is resistant to atmospheric agents and many chemicals, with excellent insulating properties.

### Application

Suction and conveyance of:

- Air
- Fumes
- Sawdust
- Shavings
- Textile fibers
- Dust

Particularly suitable for mobile installations

## Technical Information

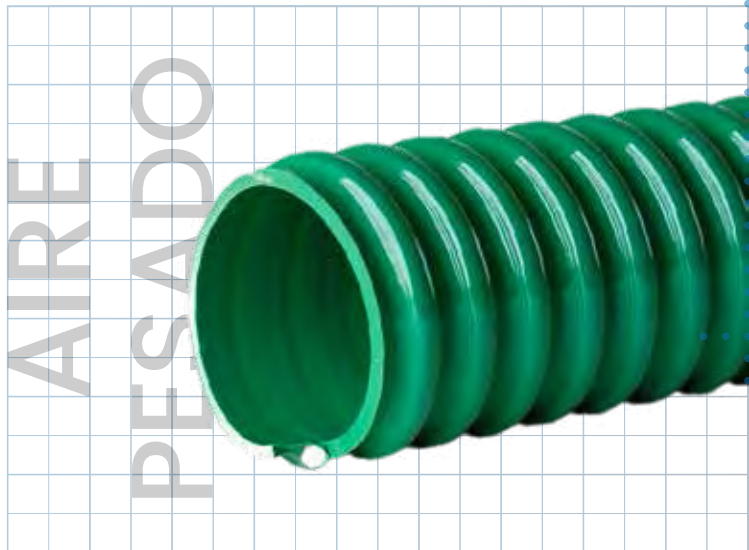
**Internal surface smooth and external surface corrugated:** extremely flexible.

**Working temperature:**  
from 23°F to 113°F

**Bending radius**  
1 times its interior diameter.

**Vacuum pressure**  
0.3 ATM = 9 in Hg.

Product Code	Commercial Size	Interior Diameter		Length	
		in	mm	m	ft
AL05GRI010003000	1		25.4	15 / 30	50 / 100
AL05GRI011403000	1 1/4		31.8	15 / 30	50 / 100
AL05GRI011203000	1 1/2		38.1	15 / 30	50 / 100
AL05GRI020003000	2		50.8	15 / 30	50 / 100
AL05GRI030003000	3		76.2	15 / 30	50 / 100
AL05GRI040003000	4		101.6	15 / 30	50 / 100
AL05GRI050002000	5		127.0	10 / 20	30 / 60
AL05GRI060002000	6		152.4	10 / 20	30 / 60
AL05GRI080002000	8		203.2	10 / 20	30 / 60
AL05GRI100002000	10		254.0	10 / 20	30 / 60



## AIRE PESADO

Code: AL06  
Line Color: Green

Tolerance: +/- 3%  
Specifications and product presentations are subject to change without prior notice.

### Characteristics

Lightweight and flexible hose made from plasticized PVC and reinforced with rigid, shock-resistant PVC, making it highly flexible. It is resistant to atmospheric agents and many chemicals.

### Application

- Light suction in agricultural machinery: fluids at low pressure.
- Transfer of:
  - Air
  - Textile fibers
  - Fumes
  - Dust
  - Sawdust
  - Shavings
  - Pellets

## Technical Information

**Internal surface smooth and external surface corrugated:** extremely flexible.

**Working temperature:**  
from 5°F to 122°F

**Bending radius**  
4 times its interior diameter.

**Vacuum pressure**  
0.7 to 0.8 ATM = 21 to 24 in Hg.

Product Code	Commercial Size in	Interior Diameter mm	Working pressure		Length	
			kg/cm <sup>2</sup> (BAR)	lb/ft <sup>2</sup> (PSI)	m	ft
AL06VER001203000	1/2	12.7	7	101	15 / 30	50 / 100
AL06VER005803000	5/8	15.9	7	101	15 / 30	50 / 100
AL06VER003403000	3/4	19.1	6	86	15 / 30	50 / 100
AL06VER007803000	7/8	22.2	6	86	15 / 30	50 / 100
AL06VER010003000	1	25.4	6	86	15 / 30	50 / 100
AL06VER011403000	1 1/4	31.8	5	72	15 / 30	50 / 100
AL06VER011203000	1 1/2	38.1	5	72	15 / 30	50 / 100
AL06VER013403000	1 3/4	44.5	5	72	15 / 30	50 / 100
AL06VER020003000	2	50.8	4	58	15 / 30	50 / 100
ALA06VER021203000	2 1/2	63.5	4	58	15 / 30	50 / 100
ALA06VER030003000	3	76.2	4	50	15 / 30	50 / 100
ALA06VER031203000	3 1/2	88.9	4	50	15 / 30	50 / 100
ALA06VER040003000	4	101.6	4	50	15 / 30	50 / 100
ALA06VER050002000	5	127.0	3	36	10 / 20	30 / 60
ALA06VER060002000	6	152.4	3	36	10 / 20	30 / 60
ALA06VER080001000	8	203.2	2	29	10	30





## AIRE PESADO ATÓXICO

Code: AL07  
Line Color: Crystal with white spiral

Tolerance: +/- 3%  
Specifications and product presentations are subject to change without prior notice.

### Normative references

FDA - Code of Federal Regulations  
(CFR) title 21, parts 175.300,177.1210 and 178.2010

### Characteristics

Lightweight and flexible hose made from plasticized PVC and reinforced with rigid, shock-resistant PVC, making it very flexible. It is resistant to atmospheric agents and many chemicals. It does not transmit odor or taste.

### Application

- Light suction in processes where a non-toxic grade is required

Used for:

- Food
- Juices
- Medications

## Technical Information

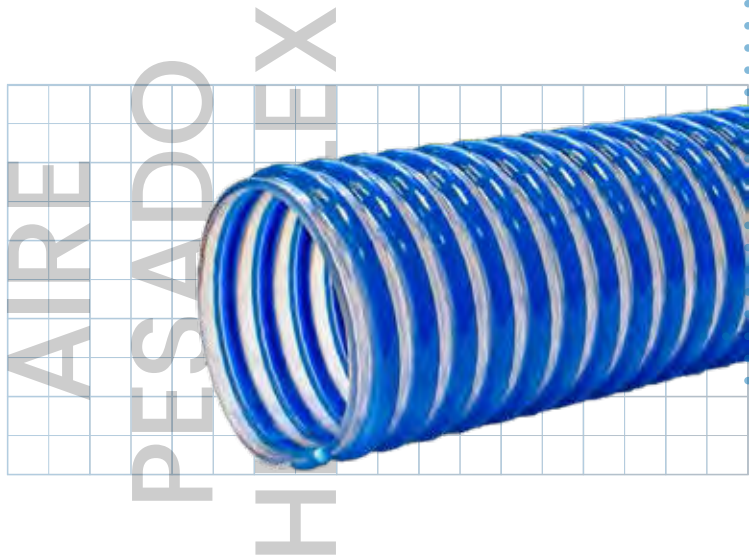
**Internal surface smooth and external surface corrugated:** extremely flexible.

**Bending radius**  
4 times its interior diameter.

**Working temperature:**  
from 5°F to 122°F

**Vacuum pressure**  
0.7 to 0.8 ATM = 21 to 24 in Hg.

Product Code	Commercial Size in	Interior Diameter mm	Working pressure		Length	
			kg/cm <sup>2</sup> (BAR)	lb/ft <sup>2</sup> (PSI)	m	ft
AL07CEB001203000	1/2	12.7	7	101	15 / 30	50 / 100
AL07CEB005803000	5/8	15.9	7	101	15 / 30	50 / 100
AL07CEB003403000	3/4	19.1	6	86	15 / 30	50 / 100
AL07CEB007803000	7/8	22.2	6	86	15 / 30	50 / 100
AL07CEB010003000	1	25.4	6	86	15 / 30	50 / 100
AL07CEB011403000	1 1/4	31.8	5	72	15 / 30	50 / 100
AL07CEB011203000	1 1/2	38.1	5	72	15 / 30	50 / 100
AL07CEB013403000	1 3/4	44.5	5	72	15 / 30	50 / 100
AL07CEB020003000	2	50.8	4	58	15 / 30	50 / 100
AL07CEB021203000	2 1/2	63.5	4	58	15 / 30	50 / 100
AL07CEB030003000	3	76.2	4	50	15 / 30	50 / 100
AL07CEB031203000	3 1/2	88.9	4	50	15 / 30	50 / 100
AL07CEB040003000	4	101.6	4	50	15 / 30	50 / 100
AL07CEB050002000	5	127.0	3	36	10 / 20	30 / 60
AL07CEB060002000	6	152.4	3	36	10 / 20	30 / 60
AL07CEB080001000	8	203.2	2	29	10	30



## AIRE PESADO HIGH FLEX

Code: AL08

Line Color: Crystal with blue spiral

Tolerance: +/- 3%

Specifications and product presentations are subject to change without prior notice.

### Characteristics

Lightweight and flexible hose made from plasticized PVC and reinforced with rigid, shock-resistant PVC, making it highly flexible. It is resistant to atmospheric agents and many chemicals. The piping offers high flexibility.

### Application

- Light suction in processes where greater flexibility is required. Suction and conveyance of:
  - Air
  - Textile fibers
  - Fumes
  - Dust
  - Sawdust
  - Shavings
  - Pellets

## Technical Information

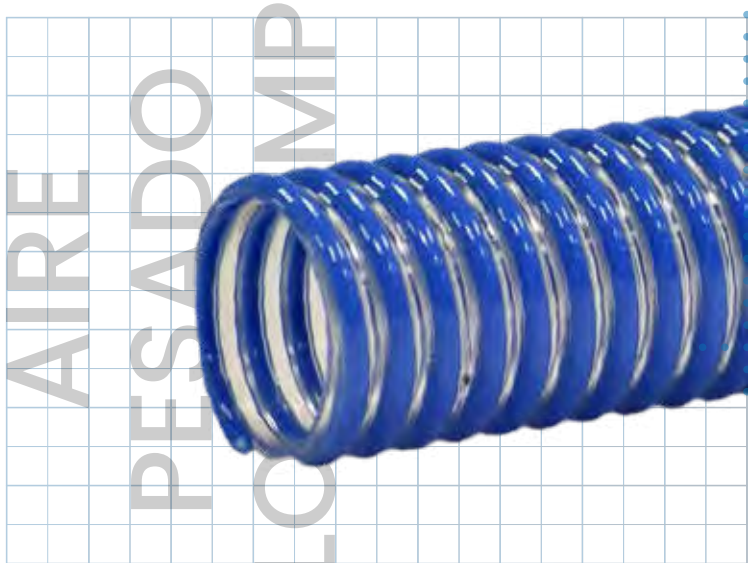
**Internal surface smooth and external surface corrugated:** extremely flexible.

**Working temperature:**  
from 5°F to 122°F

**Bending radius**  
2 times its interior diameter.

**Vacuum pressure**  
0.7 to 0.8 ATM = 21 to 24 in Hg.

Product Code	Commercial Size in	Interior Diameter mm	Working pressure		Length	
			kg/cm <sup>2</sup> (BAR)	lb/ft <sup>2</sup> (PSI)	m	ft
AL08CEA010003000	1	25.4	6	86	6.10 / 15 / 30	20 / 50 / 100
AL08CEA011403000	1 1/4	31.8	5	72	6.10 / 15 / 30	20 / 50 / 100
AL08CEA011203000	1 1/2	38.1	5	72	6.10 / 15 / 30	20 / 50 / 100
AL08CEA013403000	1 3/4	44.5	5	72	6.10 / 15 / 30	20 / 50 / 100
AL08CEA020003000	2	50.8	4	58	6.10 / 15 / 30	20 / 50 / 100
AL08CEA021203000	2 1/2	63.5	4	58	6.10 / 15 / 30	20 / 50 / 100
AL08CEA030003000	3	76.2	4	50	6.10 / 15 / 30	20 / 50 / 100
AL08CEA031203000	3 1/2	88.9	4	50	6.10 / 15 / 30	20 / 50 / 100
AL08CEA040003000	4	101.6	4	50	6.10 / 15 / 30	20 / 50 / 100
AL08CEA050002000	5	127.0	3	36	6.10 / 10 / 30	20 / 30 / 60
AL08CEA060002000	6	152.4	3	36	6.10 / 10 / 30	20 / 30 / 60
AL08CEA080001000	8	203.2	2	29	6.10 / 10	20 / 30



## AIRE PESADO LOW TEMP

Code: AL09  
Line Color: Crystal with blue spiral

### Characteristics

Lightweight and flexible hose made from plasticized PVC and reinforced with rigid, shock-resistant PVC, making it very flexible. It is resistant to atmospheric agents and many chemicals. Recommended for use in environments with temperatures as low as -40°C. Manufactured with high molecular weight PVC.

Tolerance: +/- 3%  
Specifications and product presentations are subject to change without prior notice.

### Application

- Light suction in processes where greater flexibility at low temperatures is required. Suction and conveyance of:
  - Air
  - Textile fibers
  - Fumes
  - Dust
  - Sawdust
  - Shavings
  - Pellets

## Technical Information

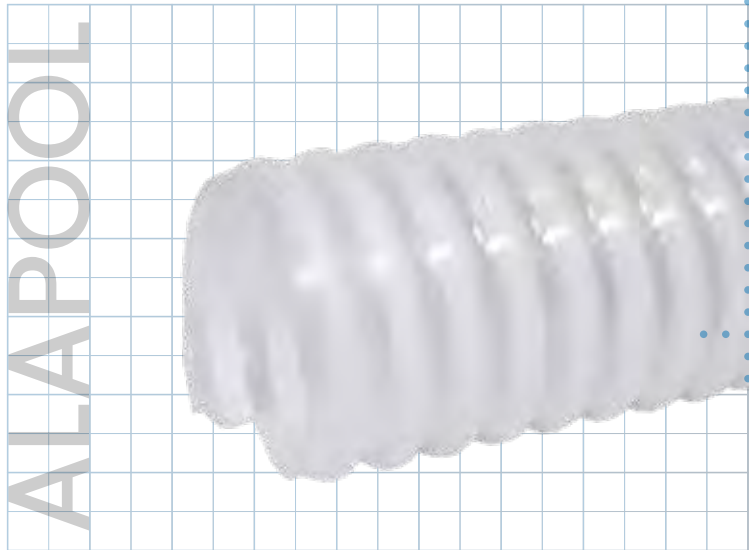
**Internal surface smooth and external surface corrugated:** extremely flexible.

**Bending radius**  
4 times its interior diameter.

**Working temperature:**  
from 40°F to 140°F

**Vacuum pressure**  
0.8 ATM = 24 in Hg.

Product Code	Commercial Size	Interior Diameter	Working pressure		Length	
	in	mm	kg/cm <sup>2</sup> (BAR)	lb/ft <sup>2</sup> (PSI)	m	ft
AL09CEA010003000	1	25.4	3	45	6.10 / 15 / 30	20 / 50 / 100
AL09CEA011403000	1 1/4	31.8	3	45	6.10 / 15 / 30	20 / 50 / 100
AL09CEA011203000	1 1/2	38.1	3	45	6.10 / 15 / 30	20 / 50 / 100
AL09CEA013403000	1 3/4	44.5	3	45	6.10 / 15 / 30	20 / 50 / 100
AL09CEA020003000	2	50.8	3	40	6.10 / 15 / 30	20 / 50 / 100
AL09CEA021203000	2 1/2	63.5	2	35	6.10 / 15 / 30	20 / 50 / 100
AL09CEA030003000	3	76.2	2	35	6.10 / 15 / 30	20 / 50 / 100
AL09CEA031203000	3 1/2	88.9	2	35	6.10 / 15 / 30	20 / 50 / 100
AL09CEA040003000	4	101.6	2	30	6.10 / 15 / 30	20 / 50 / 100
AL09CEA050002000	5	127.0	2	30	6.10 / 10 / 30	20 / 30 / 60
AL09CEA060002000	6	152.4	2	30	6.10 / 10 / 30	20 / 30 / 60
AL09CEA080001000	8	203.2	2	30	6.10 / 10	20 / 30



## ALAPOOL

Code: AL10  
Line Color: Crystal with white spiral

Tolerance: +/- 3%  
Specifications and product presentations are subject to change without prior notice.

### Characteristics

Lightweight hose made from EVA resin and polyethylene, materials that provide high flexibility, self-floating properties, and resistance to abrasion, UV rays, friction, atmospheric agents, and chemicals.

### Application

- Cleaning of fish farms by suction and discharge
- Cleaning of swimming pools by suction and discharge

## Technical Information

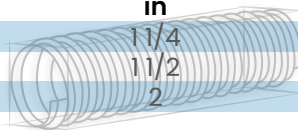
**Internal surface smooth and external surface corrugated:** extremely flexible.

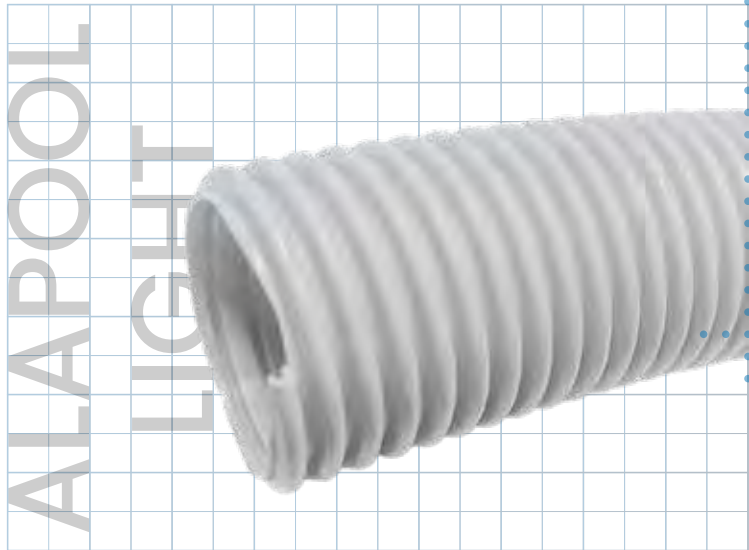
**Bending radius**  
3 times its interior diameter.

**Working temperature:**  
from 14°F to 122°F

**Vacuum pressure**  
0.4 to 0.5 ATM = 12 to 15 in Hg.

Product Code	Commercial Size in	Length	
		m	ft
AL10CEB011403000	1 1/4	7.5 / 15 / 30	25 / 50 / 100
AL10CEB011203000	1 1/2	7.5 / 15 / 30	25 / 50 / 100
AL10CEB020003000	2	7.5 / 15 / 30	25 / 50 / 100





## ALAPOOL LIGHT

Code: AL11  
Line Color: White

Tolerance: +/- 3%  
Specifications and product presentations are subject to change without prior notice.

### Characteristics

Highly lightweight hose made from low-density polyethylene, a material that provides self-floating properties and resistance to various atmospheric agents and chemicals.

### Application

- Cleaning of fish farms by suction and discharge
- Cleaning of swimming pools by suction and discharge

## Technical Information

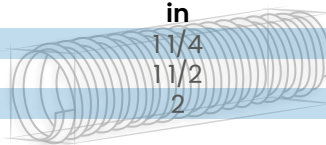
**Internal surface smooth and external surface corrugated:** extremely flexible.

**Bending radius**  
3 times its interior diameter.

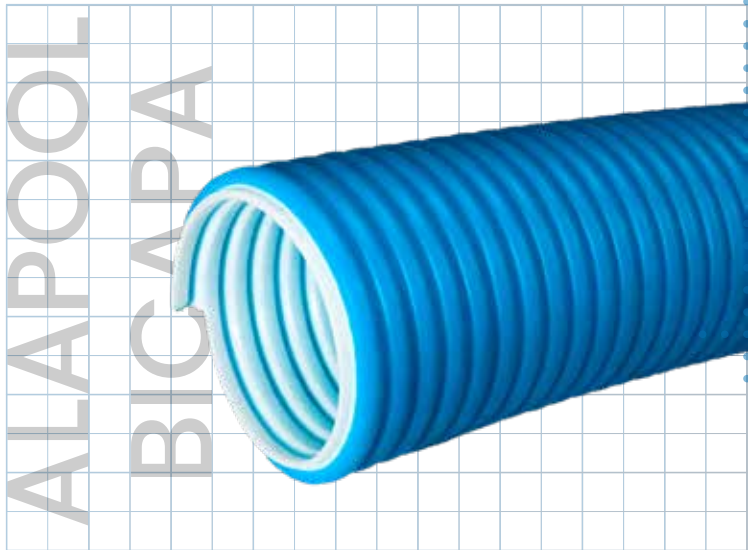
**Working temperature:**  
from 14°F to 122°F

**Vacuum pressure**  
0.4 to 0.5 ATM = 12 to 15 in Hg.

Product Code	Commercial Size in	Length	
		m	ft
AL11BLA011403000	1 1/4	7.5 / 15 / 30	25 / 50 / 100
AL11BLA011203000	1 1/2	7.5 / 15 / 30	25 / 50 / 100
AL11BLA020003000	2	7.5 / 15 / 30	25 / 50 / 100







Tolerance: +/- 3%  
Specifications and product presentations are subject to change without prior notice.

## ALAPOOL BICAPA

Code: AL12  
Line Color: blue with white interior

### Characteristics

Flexible hose made from EVA and polyethylene, materials that provide increased abrasion resistance, self-floating properties, and resistance to UV rays, friction, atmospheric agents, and chemicals.

### Application

- Cleaning of fish farms by suction and discharge where higher abrasion resistance is required
- Cleaning of swimming pools by suction and discharge where higher abrasion resistance is required

## Technical Information

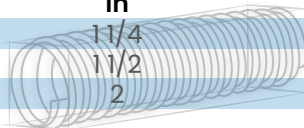
**Internal surface smooth and external surface corrugated:** extremely flexible.

**Bending radius**  
3 times its interior diameter.

**Working temperature:**  
from 14°F to 122°F

**Vacuum pressure**  
0.4 to 0.5 ATM = 12 to 15 in Hg.

Product Code	Commercial Size in	Length	
		m	ft
AL12ACB011401500	1 1/4	7.5 / 10.5 / 15	25 / 35 / 50
AL12ACB011201500	1 1/2	7.5 / 10.5 / 15	25 / 35 / 50
AL12ACB020001500	2	7.5 / 10.5 / 15	25 / 35 / 50



## ALIMENTOS



Code: AL13  
Line Color: Crystal with white spiral

Tolerance: +/- 3%  
Specifications and product presentations are subject to change without prior notice.

### Application

Transport of foodstuffs:

- Juices
- Wines
- Jams
- Dairy products
- Syrups
- Soft drinks
- Beverages with an alcohol concentration not exceeding 28% (56° G.L.)
- Transport of dry, granular materials

### Characteristics

Robust, non-toxic hose made from plasticized PVC with rigid spiral reinforcement, providing the flexibility of a hose and the strength of a rigid tube. It is resistant to atmospheric agents and a wide range of chemicals.

**Internal and external surface smooth (1/2" to 3" and 10"):** facilitates clamp adjustment.

**Internal surface smooth and external surface corrugated (3 1/2" to 8"):** Enhances flexibility.

### Normative references

FDA - Code of Federal Regulations  
(CFR) title 21, parts 175.300,177.1210 and 178.2010

## Technical Information

**Smooth internal and external surface**  
**Smooth inner and corrugated outer surface**

**Bending radius**  
5 times its interior diameter.

**Working temperature:**  
from 14°F to 140°F

**Vacuum pressure**  
0.8 ATM = 24 in Hg.

Product Code	Commercial	Interior Diameter	Working pressure		Length	
	Size		kg/cm <sup>2</sup>	lb/ft <sup>2</sup>	m	ft
	in	mm	(BAR)	(PSI)		
AL13CEB001203000	1/2	12.7	10	144	15 / 30	50 / 100
AL13CEB005803000	5/8	15.9	10	144	15 / 30	50 / 100
AL13CEB003403000	3/4	19.1	8	115	15 / 30	50 / 100
AL13CEB007803000	7/8	22.2	8	115	15 / 30	50 / 100
AL13CEB010003000	1	25.4	8	115	15 / 30	50 / 100
AL13CEB011403000	1 1/4	31.8	7	101	15 / 30	50 / 100
AL13CEB011203000	1 1/2	38.1	7	101	15 / 30	50 / 100
AL13CEB020003000	2	50.8	6	86	15 / 30	50 / 100
AL13CEB021203000	2 1/2	63.5	6	86	15 / 30	50 / 100
AL13CEB030003000	3	76.2	5	72	15 / 30	50 / 100
AL13CEB031203000	3 1/2	88.9	5	72	15 / 30	50 / 100
AL13CEB040003000	4	101.6	5	72	15 / 30	50 / 100
AL13CEB050002000	5	127.0	4	58	10 / 20	30 / 60
AL13CEB060002000	6	152.4	3	43	10 / 20	30 / 60
AL13CEB080001000	8	203.2	3	43	10	30
AL13CEB100000610	10	254.0	2	35	6.1	20

## ALIMENTOS CON ANTIESTÁTICO

Code: AL14  
 Line Color: Crystal with white spiral

Tolerance: +/- 3%

Specifications and product presentations are subject to change without prior notice.

### Application

Food Transport:

- Juices
- Wines
- Jams
- Dairy products
- Syrups
- Soft drinks
- Beverages with an alcohol content of up to 28% (56° G.L.)
- Transport of granular dry materials

### Characteristics

Robust, non-toxic hose made of plastified PVC with a rigid anti-shock spiral reinforcement. This combination provides the flexibility of a hose and the durability of a rigid tube. It is resistant to atmospheric agents and a wide range of chemicals. Constructed with copper wire to prevent static electricity buildup and help maintain continuous material flow.

**Smooth internal and external surface (1 to 3"):** facilitates clamp adjustment.

**Smooth internal surface and corrugated external surface (3 1/2" to 6"):** enhances flexibility.

### Normative references

FDA - Code of Federal Regulations  
 (CFR) title 21, parts 175.300,177.1210 and 178.2010

## Technical Information

**Smooth internal and external surface**  
**Smooth inner and corrugated outer surface**

**Bending radius**

5 times its interior diameter.

**Working temperature:**  
 from 14°F to 140°F

**Vacuum pressure**  
 0.8 ATM = 24 in Hg

Product Code	Commercial Size in	Interior Diameter mm	Working pressure		Length	
			kg/cm <sup>2</sup> (BAR)	lb/ft <sup>2</sup> (PSI)	m	ft
AL14CEB010003000	1	25.4	8	115	15 / 30	50 / 100
AL14CEB011403000	1 1/4	31.8	7	101	15 / 30	50 / 100
AL14CEB011203000	1 1/2	38.1	7	101	15 / 30	50 / 100
AL14CEB020003000	2	50.8	6	86	15 / 30	50 / 100
AL14CEB021203000	2 1/2	63.5	6	86	15 / 30	50 / 100
AL14CEB030003000	3	76.2	5	72	15 / 30	50 / 100
AL14CEB031203000	3 1/2	88.9	5	72	15 / 30	50 / 100
AL14CEB040003000	4	101.6	5	72	15 / 30	50 / 100
AL14CEB050002000	5	127.0	4	58	10 / 20	30 / 60
AL14CEB060002000	6	152.4	3	43	10 / 20	30 / 60

# ALIMENTOS PLUS

## ALIMENTOS PLUS

Code: AL15  
Line Color: Crystal with white spiral

Tolerance: +/- 3%  
Specifications and product presentations are subject to change without prior notice.

### Application

Food transport:

- Juices
- Wines
- Jams
- Dairy products
- Syrups
- Soft drinks
- Beverages with an alcohol content of up to 28% (56° G.L.)
- Transport of granular dry materials

### Characteristics

Free of **phthalates**

Robust, non-toxic hose made of plastified PVC with a rigid anti-shock spiral reinforcement, providing the flexibility of a hose and the durability of a rigid tube. Resistant to atmospheric agents and a wide range of chemicals.

**Smooth internal and external surface (1/2" to 3" and 10"):** facilitates clamp adjustment.

**Smooth internal surface and corrugated external surface (3 1/2" to 8"):** enhances flexibility.

### Normative references

FDA - Code of Federal Regulations  
(CFR) title 21, parts 175.300,177.1210 and 178.2010

## Technical Information

**Smooth internal and external surface**  
**Smooth inner and corrugated outer surface**

**Working temperature:**  
from 5°F to 149°F

**Bending radius**  
7 times its interior diameter.

**Vacuum pressure**  
1 ATM = 30 in Hg

Product Code	Commercial Size in	Interior Diameter mm	Working pressure		Length	
			kg/cm <sup>2</sup> (BAR)	lb/ft <sup>2</sup> (PSI)	m	ft
AL15CEB001203000	1/2	12.7	10	144	15 / 30	50 / 100
AL15CEB005803000	5/8	15.9	10	144	15 / 30	50 / 100
AL15CEB003403000	3/4	19.1	8	115	15 / 30	50 / 100
AL15CEB007803000	7/8	22.2	8	115	15 / 30	50 / 100
AL15CEB010003000	1	25.4	8	115	15 / 30	50 / 100
AL15CEB011403000	1 1/4	31.8	7	101	15 / 30	50 / 100
AL15CEB011203000	1 1/2	38.1	7	101	15 / 30	50 / 100
AL15CEB020003000	2	50.8	6	86	15 / 30	50 / 100
AL15CEB021203000	2 1/2	63.5	6	86	15 / 30	50 / 100
AL15CEB030003000	3	76.2	5	72	15 / 30	50 / 100
AL15CEB031203000	3 1/2	88.9	5	72	15 / 30	50 / 100
AL15CEB040003000	4	101.6	5	72	15 / 30	50 / 100
AL15CEB050002000	5	127.0	4	58	10 / 20	30 / 60
AL15CEB060002000	6	152.4	3	43	10 / 20	30 / 60
AL15CEB080001000	8	203.2	3	43	10	30
AL15CEB100000610	10	254.0	2	35	6.1	20

## ASPIRADORA



Code: AL16  
Line Color: Metallic gray

Tolerance: +/- 3%  
Specifications and product presentations are subject to change without prior notice.

### Characteristics

Highly lightweight and flexible hose made from EVA and polyethylene, materials that provide greater drag resistance, self-floating properties, and resistance to various atmospheric and chemical agents. Left-hand or right-hand cord.

### Application

- In industrial equipment for suction
- In household equipment for suction
- Pneumatic cleaning
- Hydraulic cleaning
- Where high flexibility is required

## Technical Information

**Internal and external surface corrugated:** extremely flexible.

**Working temperature:** from 14°F to 122°F

**Bending radius**  
1 time its inner diameter

**Vacuum pressure**  
From 0.4 to 0.5 ATM = From 12 to 15 in Hg

Product Code	Commercial Size in	Length	
		m	ft
AL16GRM011401600	1 1/4	2 / 15 / 16	7 / 50 / 53
AL16GRM011201600	1 1/2	2 / 15 / 16	7 / 50 / 53



# ASPIRADORA BICAPA

## ASPIRADORA BICAPA



Code: AL17  
Line Color: Gray with black interior

Tolerance: +/- 3%  
Specifications and product presentations are subject to change without prior notice.

### Characteristics

Hose made from EVA and polyethylene, materials that provide greater drag resistance, self-floating properties, and resistance to various atmospheric and chemical agents.

### Application

- In industrial equipment for suction
- In household equipment for suction
- Pneumatic cleaning
- Hydraulic cleaning
- Where drag resistance is required

## Technical Information

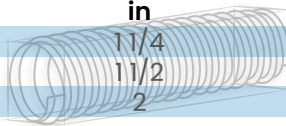
**Internal and external surface corrugated:** extremely flexible.

**Bending radius**  
3 times its interior diameter.

**Working temperature:**  
from 14°F to 140°F

**Vacuum pressure**  
0.6 ATM = 18 in Hg

Product Code	Commercial Size in	Length	
		m	ft
AL17GCN011401500	1 1/4	7.5 / 10.5 / 15	25 / 35 / 50
AL17GCN011201500	1 1/2	7.5 / 10.5 / 15	25 / 35 / 50
AL17GCN020001500	2	7.5 / 10.5 / 15	25 / 35 / 50



## ASPIRADORA PVC



Code: AL18  
Line Color: Metallic gray

Tolerance: +/- 3%  
Specifications and product presentations are subject to change without prior notice.

### Characteristics

Lightweight and highly flexible hose made of PVC with a rigid spiral reinforcement, providing high impact resistance, drag resistance, and resistance to various chemicals and detergents.

### Application

- In industrial equipment for suction
- In household equipment for suction
- Cleaning

## Technical Information

**Internal and external surface corrugated:** extremely flexible.

**Bending radius**  
1 time its inner diameter

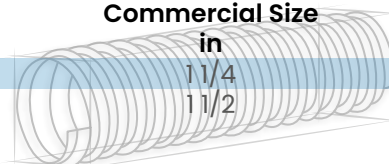
**Working temperature:**  
from 14°F to 140°F

**Vacuum pressure**  
0.6 ATM = 18 in Hg

#### Product Code

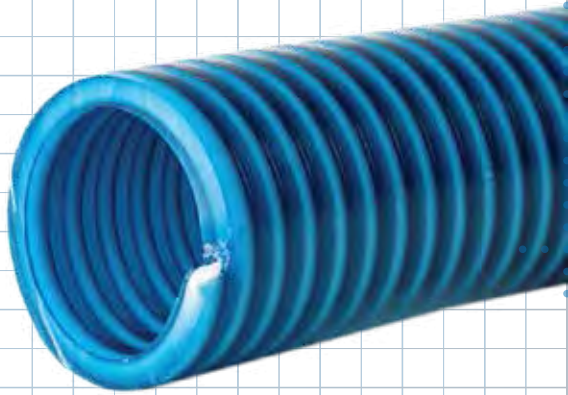
AL18GRM011401500  
AL18GRM011201500

#### Commercial Size



#### Length

	m	ft
1 1/4 in	15 / 30	50 / 100
1 1/2 in	15 / 30	50 / 100



## COMBUSTIBLE

Code: AL19  
Line Color: Crystal blue with white spiral

Tolerance: +/- 3%  
Specifications and product presentations are subject to change without prior notice.

### Characteristics

Resistant and flexible hose made of plastified PVC with a rigid anti-shock spiral reinforcement, providing the flexibility of a hose and the durability of a rigid hose.

Resistant to a wide range of chemicals and atmospheric agents. Ideal for handling oils and gasoline.

**Smooth internal and external surface (1" to 3"):** facilitates clamp adjustment.

**Smooth internal surface and corrugated external surface (4" to 6"):** enhances flexibility.

### Application

- Transfer and discharge of fuels
- Transfer and discharge of mineral and vegetable oils

## Technical Information

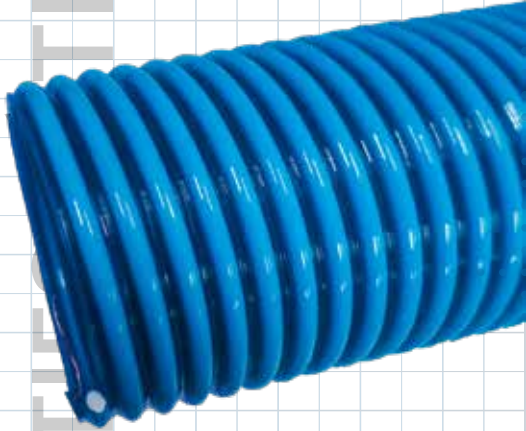
**Smooth internal and external surface**  
**Smooth inner and corrugated outer surface**

**Working temperature:**  
from 5°F to 140°F

**Bending radius**  
7 times its interior diameter.

Product Code	Commercial	Interior	Working pressure		Vacuum	Length	
	Size	Diameter	kg/cm <sup>2</sup>	lb/ft <sup>2</sup>	pressure	m	ft
	in	mm	(BAR)	(PSI)	in Hg		
AL19CZB010003000	1	25.4	9	131	30	15 / 30	50 / 100
AL19CZB011403000	1 1/4	31.8	9	131	30	15 / 30	50 / 100
AL19CZB011203000	1 1/2	38.1	9	131	30	15 / 30	50 / 100
AL19CZB020003000	2	50.8	8	116	30	15 / 30	50 / 100
AL19CZB021203000	2 1/2	63.5	7	102	30	15 / 30	50 / 100
AL19CZB030003000	3	76.2	6	87	30	15 / 30	50 / 100
AL19CZB040003000	4	101.6	5	73	30	15 / 30	50 / 100
AL19CZB050002000	5	127.0	4	58	28	10 / 20	30 / 60
AL19CZB060002000	6	152.4	3.5	51	28	10 / 20	30 / 60

COMBUSTIBLE  
CON  
ANTIESTÁTICO



## COMBUSTIBLE CON ANTIESTÁTICO

Code: AL20

Line Color: Crystal blue with white spiral

Tolerance: +/- 3%

Specifications and product presentations are subject to change without prior notice.

### Application

- Transfer and discharge of fuels where static charge reduction is required.
- Transfer and discharge of mineral and vegetable oils where static charge reduction is required.

### Characteristics

Durable and flexible hose made of plasticized PVC with a rigid spiral reinforcement that is shock-resistant, combining the flexibility of a hose with the strength of a rigid hose.

Resistant to a wide range of chemicals and atmospheric agents. Ideal for handling oils and gasoline.

Made with copper wire to eliminate static charges.

**Internal and external surface smooth (1" to 3"):** facilitates clamp adjustment.

**Internal surface smooth and external surface corrugated (4" to 6"):** improves flexibility.

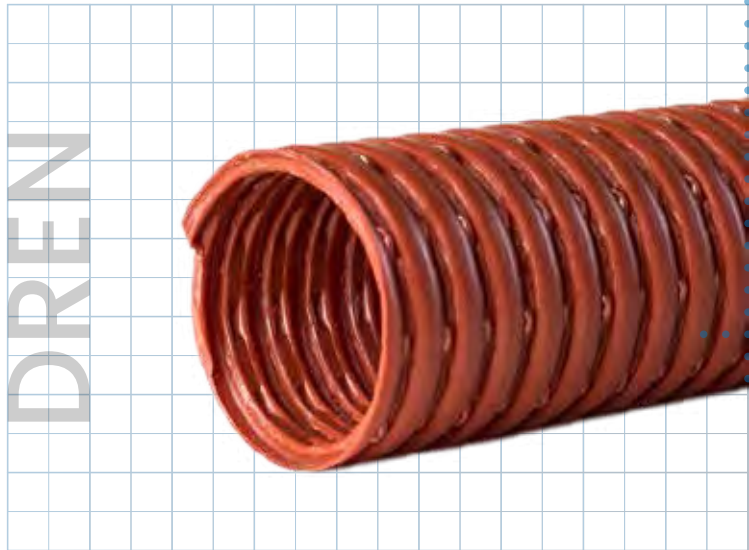
## Technical Information

**Smooth internal and external surface**  
**Smooth inner and corrugated outer surface**

**Working temperature:**  
from 5°F to 140°F

**Bending radius**  
7 times its interior diameter.

Product Code	Commercial	Interior	Working pressure		Vacuum	Length	
	Size	Diameter	kg/cm <sup>2</sup>	lb/ft <sup>2</sup>	pressure	m	ft
	in	mm	(BAR)	(PSI)	in Hg		
AL20CZB010003000	1	25.4	9	131	30	15 / 30	50 / 100
AL20CZB011403000	1 1/4	31.8	9	131	30	15 / 30	50 / 100
AL20CZB011203000	1 1/2	38.1	9	131	30	15 / 30	50 / 100
AL20CZB020003000	2	50.8	8	116	30	15 / 30	50 / 100
AL20CZB021203000	2 1/2	63.5	7	102	30	15 / 30	50 / 100
AL20CZB030003000	3	76.2	6	87	30	15 / 30	50 / 100
AL20CZB040003000	4	101.6	5	73	30	15 / 30	50 / 100
AL20CZB050002000	5	127.0	4	58	28	10 / 20	30 / 60
AL20CZB060002000	6	152.4	3.5	51	28	10 / 20	30 / 60



## DREN

Code: AL21  
Line Color: Brick red

Tolerance: +/- 3%  
Specifications and product presentations are subject to change without prior notice.

### Application

- Drainage of sports fields, roads, railways, airports, retaining walls, agricultural fields, and constructions.
- Groundwater level control.
- Washing of alkaline soils.
- For underground irrigation.

### Characteristics

Corrugated perforated hose, made of high-density polyethylene.

Resistant to corrosion and the action of a wide range of chemicals (alkalis and acids, organic and inorganic solvents).

The ribs that protect the openings prevent clogging, unlike other pipes used for the same purpose, which require an additional filtering element (textile, coconut fiber, straw, gravel).

## Technical Information

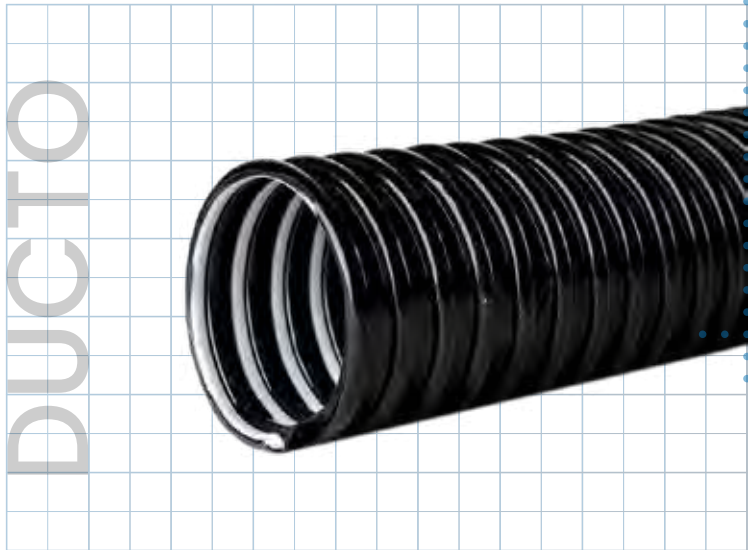
**Corrugated inner and outer surface**

**Working temperature:**  
from 14°F to 140°F

**Bending radius**  
7 times its interior diameter.

Product Code	Commercial Size	Interior Diameter	External Diameter	Perforated surface cm <sup>2</sup> /mm	Length	
	in	mm	mm		m	ft
AL21LAD015803000	1 5/8	42.0	50.0	50	15 / 30	50 / 100
AL21LAD021203000	2 1/2	65.0	75.0	75	15 / 30	50 / 100
AL21LAD040003000	4	99.0	110.0	110	15 / 30	50 / 100
AL21LAD060002000	6	140.0	155.0	155	10 / 20	25 / 50
AL21LAD080001000	8	180.0	200.0	200	10	25





Tolerance: +/- 3%  
Specifications and product presentations are subject to change without prior notice.

## DUCTO

Code: AL22  
Line Color: Black

### Characteristics

Duct made of plasticized PVC with a semi-rigid shock-resistant PVC reinforcement.

Very flexible and lightweight, allowing for perfect adjustment even in difficult spaces.

### Application

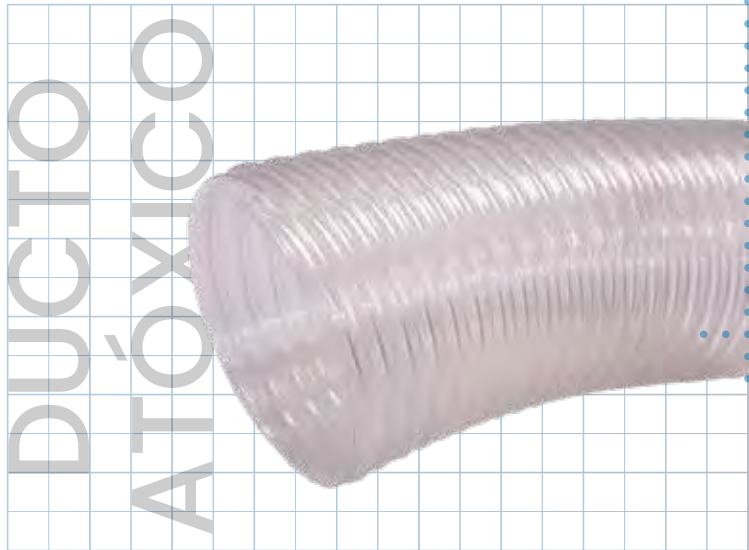
- Air, vapor, and dust transfer.
- Industrial and automotive air conditioning installation.
- Other special installations.

## Technical Information

Corrugated inner and outer surface

Working temperature:  
from 14°F to 122°F

Product Code	Commercial Size		Interior Diameter		Length	
	in	mm	m	ft		
AL22NEG011200600	1 1/2	38.1	6	25		
AL22NEG020000600	2	50.8	6	25		
AL22NEG021200600	2 1/2	63.5	6	25		
AL22NEG030000600	3	76.2	6	25		
AL22NEG031200600	3 1/2	88.9	6	25		
AL22NEG040000600	4	101.6	6	25		
AL22NEG050000600	5	127.0	6	25		
AL22NEG060000600	6	152.4	6	25		
AL22NEG080000600	8	203.2	6	25		



## DUCTO ATÓXICO

Code: AL23  
Line Color: Crystal

Tolerance: +/- 3%

Specifications and product presentations are subject to change without prior notice.

### Normative references

**FDA** - Code of Federal Regulations  
**(CFR)** title 21, parts 175.300,177.1210 and 178.2010

### Characteristics

Duct made of plasticized PVC with a semi-rigid shock-resistant PVC reinforcement. Highly flexible and lightweight, allowing for perfect fitting even in tight spaces.

### Application

- Air and vapor transfer where a non-toxic grade is required
- Air conditioning installation and other applications where a non-toxic grade is required

## Technical Information

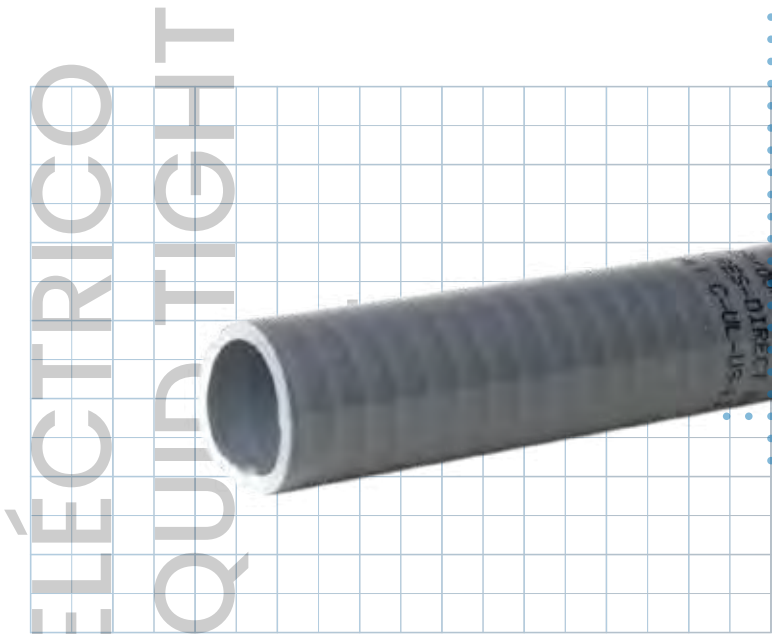
**Corrugated inner and outer surface**

**Working temperature:**  
from 14°F to 122°F

Product Code	Commercial Size		Interior Diameter		Length	
	in	mm	m	ft		
AL23CRI011200600	1 1/2	38.1	6	25		
AL23CRI020000600	2	50.8	6	25		
AL23CRI021200600	2 1/2	63.5	6	25		
AL23CRI030000600	3	76.2	6	25		
AL23CRI031200600	3 1/2	88.9	6	25		
AL23CRI040000600	4	101.6	6	25		
AL23CRI050000600	5	127.0	6	25		
AL23CRI060000600	6	152.4	6	25		
AL23CRI080000600	8	203.2	6	25		

# ELÉCTRICO LIQUID TIGHT UL

Code: AL24  
Line Color: Gray



Tolerance: +/- 3%

Specifications and product presentations are subject to change without prior notice.

## Characteristics

### Liquid Tight Flexible Non-Metallic Conduit Type B

Lightweight and flexible hose made of flexible PVC with a rigid shock-resistant PVC spiral reinforcement. Resistant to corrosion, abrasion, and is self-extinguishing (flame-resistant). Resistant to sunlight, water, and chemicals.

## Normative references

**Certificate UL 1660**  
FILE E220585

## Application

To be used where conductors need protection from vapors, liquids, solids, or outdoor conditions, in installations subject to vibrations, movements, or settlements, and for electrical installations.

- Can be buried directly or encased in concrete.
- Compatible with non-metallic connectors for easy installation.
- Designed for commercial and industrial applications.
- For flexible connections.

### It can be used under ANSI / NFPA-70, National Electrical Code (NEC) Article 356

- Agricultural constructions Article 547.5
- Power circuits and interconnection cables; Under raised floors Article 645.5 (E)(2)
- Information technology equipment Article. 300.22 (D)
- Flexible connections to pool, spa, and jacuzzi motors Article 680.21 (A)(3) and 680.42 (A)(1)
- Wiring for secondary circuits for neon tubes over 1000 volts Article 600.3 (A)

For hazardous locations according to:  
501.10 (B)(2) Class I Div.2  
502.10 (A)(2) y (B)(2) Class II Div. 1 and 2  
503.10 (A) (3) y (B) Class III Div. 1 and 2

## Technical Information

**smooth Internal and external surface:** allows for easy threading of conductors.

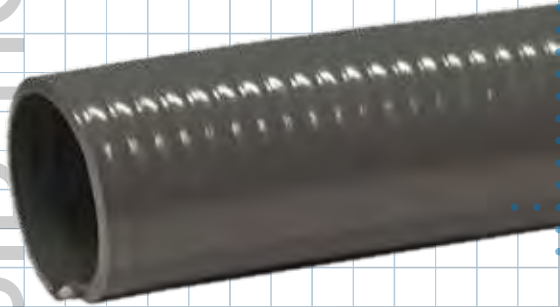
**Working temperature:**  
from -0.4°F to 176°F

### Clasificación

176°F dry, 140°F wet, 158°F oil-resistant

Product Code	Commercial Size	Interior Diameter mm		External Diameter mm		Length	
	in	min	max	min	max	m	ft
AL24GRI003803048	3/8	12.3	12.8	17.5	18.00	15.24/30.48	50/100
AL24GRI001203048	1/2	15.8	16.3	20.8	21.30	15.24/30.48	50/100
AL24GRI003403048	3/4	20.8	21.3	26.2	26.70	15.24/30.48	50/100
AL24GRI010003048	1	26.4	27.1	32.8	33.40	15.24/30.48	50/100
AL24GRI011403048	1 1/4	35.1	35.8	41.4	42.20	15.24/30.48	50/100
AL24GRI011203048	1 1/2	40.0	40.6	47.4	48.30	15.24/30.48	50/100
AL24GRI020003048	2	51.3	51.9	59.4	60.30	15.24/30.48	50/100

## ELÉCTRICO LIQUID TIGHT



Code: AL25  
Line Color: Gray

Tolerance: +/- 3%

Specifications and product presentations are subject to change without prior notice.

### Characteristics

Lightweight and flexible hose made of flexible PVC with a rigid shock-resistant PVC spiral reinforcement. Resistant to corrosion, abrasion, and is self-extinguishing (flame-resistant). Resistant to sunlight, water, and chemicals.

### Normative references

Internal and external diameters that comply with **UL 1660 standard**

### Application

To be used where conductors need protection from vapors, liquids, solids, or outdoor conditions, in installations subject to vibrations, movements, or settlements, and for electrical installations.

- Can be buried directly or encased in concrete.
- Compatible with non-metallic connectors for easy installation.
- Designed for commercial and industrial applications.
- For flexible connections.

**It can be used under ANSI / NFPA-70, National Electrical Code (NEC) Article 356**

- Agricultural constructions Article 547.5
- Power circuits and interconnection cables; Under raised floors Article 645.5 (E)(2)
- Information technology equipment Article 300.22 (D)
- Flexible connections to pool, spa, and jacuzzi motors Article 680.21 (A)(3) and 680.42 (A)(1)
- Wiring for secondary circuits for neon tubes over 1000 volts Article 600.3 (A)

For hazardous locations according to:  
501.10 (B)(2) Class I Div.2  
502.10 (A)(2) y (B)(2) Class II Div. 1 y 2  
503.10 (A) (3) y (B) Class III Div. 1 y 2

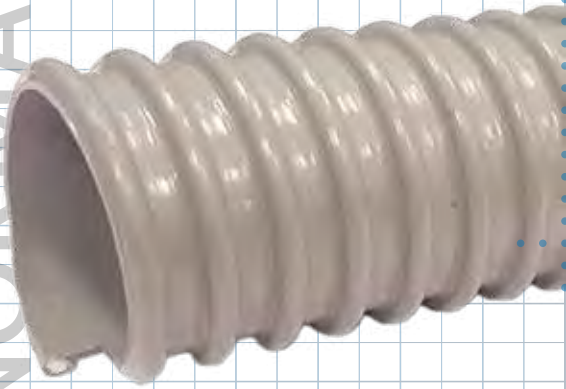
## Technical Information

**smooth Internal and external surface:** allows for easy threading of conductors.

**Working temperature:**  
from -0.4°F to 176°F

Product Code	Commercial Size	Interior Diameter		External Diameter		Length	
		in	mm	mm	mm	m	ft
AL25GRI021203048	2 1/2	min	max	min	max	15.24/30.48	50/100
AL25GRI030003048	3	62.9	63.7	72.0	73.0	15.24/30.48	50/100
AL25GRI040003048	4	77.9	79.2	87.8	88.9	15.24/30.48	50/100
		101.6	103.0	113.2	114.3	15.24/30.48	50/100

ELÉCTRICO  
NORMAL



Tolerance: +/- 3%

Specifications and product presentations are subject to change without prior notice.

## ELÉCTRICO NORMAL

Code: AL26  
Line Color: Light Gray

### Characteristics

Lightweight and flexible hose made of plasticized PVC with a rigid shock-resistant PVC spiral reinforcement, making it highly flexible. Resistant to atmospheric agents and many chemicals, with excellent insulating properties.

**External surface corrugated:** extremely flexible.

### Application

- For use where conductors need protection from vapors, liquids, and solids
- For installations subject to vibrations, movements, or settlements
- Can be encased in concrete, used outdoors, and buried

## Technical Information

**Internal surface smooth and external surface corrugated:** allows for easy threading of conductors.

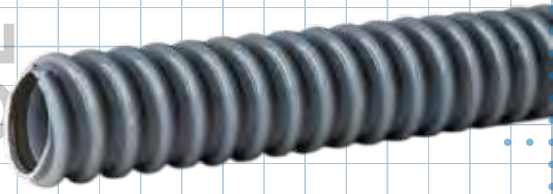
**Working temperature:**  
from 14°F to 122°F

**Bending radius**  
1 time its inner diameter

Product Code	Commercial Size		Interior Diameter		Length	
	in	mm	m	ft		
AL26GRI051603000	5/16	7.9	15 / 30	50 / 100		
AL26GRI001203000	1/2	12.7	15 / 30	50 / 100		
AL26GRI005803000	5/8	15.9	15 / 30	50 / 100		
AL26GRI003403000	3/4	19.1	15 / 30	50 / 100		
AL26GRI007803000	7/8	22.2	15 / 30	50 / 100		
AL26GRI010003000	1	25.4	15 / 30	50 / 100		
AL26GRI011403000	1 1/4	31.8	15 / 30	50 / 100		
AL26GRI011203000	1 1/2	38.1	15 / 30	50 / 100		
AL26GRI013403000	1 3/4	44.5	15 / 30	50 / 100		
AL26GRI020003000	2	50.8	15 / 30	50 / 100		
AL26GRI021203000	2 1/2	63.5	15 / 30	50 / 100		
AL26GRI030003000	3	76.2	15 / 30	50 / 100		
AL26GRI031203000	3 1/2	88.9	15 / 30	50 / 100		
AL26GRI040003000	4	101.6	15 / 30	50 / 100		
AL26GRI050002000	5	127.0	10 / 20	20 / 25		
AL26GRI060002000	6	152.4	10 / 20	20 / 25		
AL26GRI080002000	8	203.2	10 / 20	20 / 25		
AL26GRI100002000	10	254.0	10 / 20	20 / 25		



## ELÉCTRICO UL



Code: AL27  
Line Color: Gray

Tolerance: +/- 3%

Specifications and product presentations are subject to change without prior notice.

### Normative references

Internal and external diameters that comply with **UL 1660 standard**

### Characteristics

Lightweight and flexible hose made of plasticized PVC with a rigid shock-resistant PVC reinforcement, making it highly flexible. Resistant to atmospheric agents and many chemicals, with excellent insulating properties.

### Application

- For use where conductors need protection from vapors, liquids, and solids
- For installations subject to vibrations, movements, or settlements
- Can be encased in concrete, used outdoors, and buried

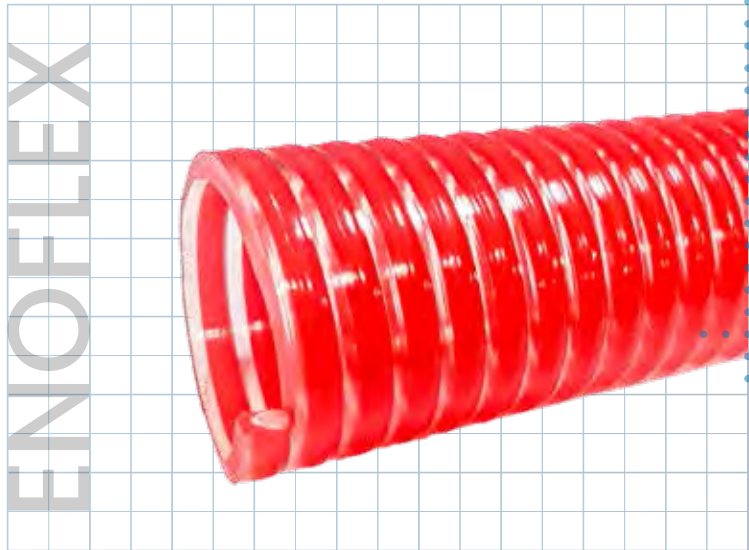
## Technical Information

**smooth Internal and external surface:** allows for easy threading of conductors.

**Working temperature:** from 14°F to 122°F

**Bending radius**  
1 time its inner diameter

Product Code	Commercial Size	Interior Diameter mm		External Diameter mm		Length		
		in	min	max	min	max	m	ft
AL27GRI003803000	3/8		12.3	12.8	17.5	18.0	15.24 / 30.48	50 / 100
AL27GRI001203000	1/2		15.8	16.3	20.8	21.3	15.24 / 30.48	50 / 100
AL27GRI003403000	3/4		20.8	21.3	26.2	26.7	15.24 / 30.48	50 / 100
AL27GRI010003000	1		26.4	27.1	32.8	33.4	15.24 / 30.48	50 / 100
AL27GRI011403000	1 1/4		35.1	35.8	41.4	42.2	15.24 / 30.48	50 / 100
AL27GRI011203000	1 1/2		40.0	40.6	47.4	48.3	15.24 / 30.48	50 / 100
AL27GRI020003000	2		51.3	51.9	59.4	60.3	15.24 / 30.48	50 / 100
AL27GRI030003000	3		77.9	79.7	87.8	88.9	15.24 / 30.48	50 / 100
AL27GRI040003000	4		101.6	103.6	112.7	113.8	15.24 / 30.48	50 / 100



## ENOFLEX

Code: AL28  
Line Color: Crystal with red spiral

Tolerance: +/- 3%

Specifications and product presentations are subject to change without prior notice.

### Normative references

FDA - Code of Federal Regulations (CFR) title 21, parts 175.300,177.1210 and 178.2010

### Characteristics

#### Free of phthalates

Robust, non-toxic hose made of plasticized PVC with a rigid shock-resistant spiral reinforcement, combining the flexibility of a hose with the strength of a rigid pipe. Resistant to atmospheric agents and a wide range of chemicals.

**Internal and external surface smooth (1/2" to 3" and 10"):** facilitates clamp adjustment.

**Internal surface smooth and external surface corrugated (3 1/2" to 8"):** enhances flexibility.

### Application

- Transfer of wines
- Transfer of dairy products, vegetable oils, and mineral oils

## Technical Information

**Smooth internal and external surface**  
**Smooth inner and corrugated outer surface**

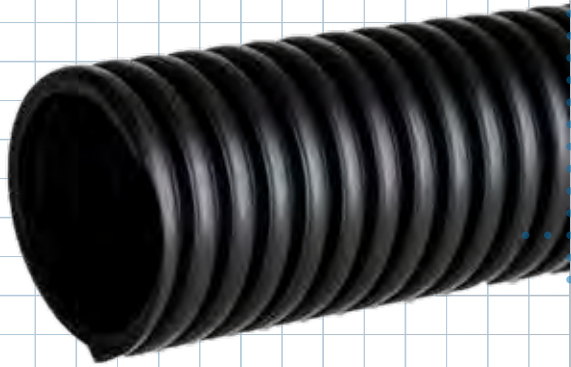
**Bending radius**  
5 times its interior diameter.

**Working temperature:**  
from 14°F to 149°F

**Vacuum pressure**  
0.8 ATM = 24 in Hg

Product Code	Commercial Size in	Interior Diameter mm	Working pressure		Length	
			kg/cm <sup>2</sup> (BAR)	lb/ft <sup>2</sup> (PSI)	m	ft
AL28CER001203000	1/2	12.7	9	130	15 / 30	50 / 100
AL28CER005803000	5/8	15.9	9	130	30	100
AL28CER003403000	3/4	19.1	7	101	30	100
AL28CER007803000	7/8	22.2	7	101	30	100
AL28CER010003000	1	25.4	7	101	30	100
AL28CER011403000	1 1/4	31.8	6	86	30	100
AL28CER011203000	1 1/2	38.1	6	86	30	100
AL28CER020003000	2	50.8	5	72	30	100
AL28CER021203000	2 1/2	63.5	5	72	30	100
AL28CER030003000	3	76.2	5	65	30	100
AL28CER031203000	3 1/2	88.9	5	65	30	100
AL28CER040003000	4	101.6	5	65	30	100
AL28CER050002000	5	127.0	4	50	10 / 20	30 / 60
AL28CER060002000	6	152.4	3	43	10 / 20	30 / 60
AL28CER080001000	8	203.2	3	36	10	30
AL28CER100000610	10	254.0	2	35	6.1	20

## ESTRUCTURAL



Code: AL29  
Line Color: Black

Tolerance: +/- 3%  
Specifications and product presentations are subject to change without prior notice.

### Characteristics

Lightweight corrugated hose made of high-density polyethylene. Adapts to uneven terrain. Chemically resistant to alkaline materials and acids, as well as organic and inorganic solvents.

### Application

- Cable (strand) protection in construction (post-tensioned)
- Low-pressure water movement
- Electrical wiring in cities and highways
- Can be used outdoors or buried

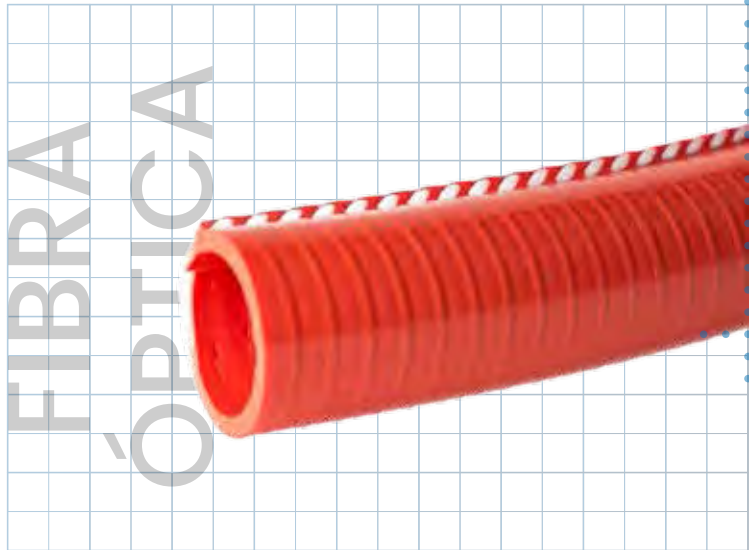
## Technical Information

corrugated inner and outer surface

**Working temperature:**  
from 14°F to 140°F

**Bending radius**  
7 times its interior diameter.

Product Code	Commercial Size	Interior Diameter	Exterior Diameter	Length	
	in	mm	mm	m	ft
AL29NEG007803000	7/8	22.0	26.0	15 / 30	50 / 100
AL29NEG010003000	1	23.0	28.0	15 / 30	50 / 100
AL29NEG011403000	1 1/4	32.0	38.0	15 / 30	50 / 100
AL29NEG011203000	1 1/2	37.0	41.0	15 / 30	50 / 100
AL29NEG015803000	1 5/8	42.0	50.0	15 / 30	50 / 100
AL29NEG013403000	1 3/4	45.0	54.0	15 / 30	50 / 100
AL29NEG020003000	2	49.0	57.0	15 / 30	50 / 100
AL29NEG021203000	2 1/2	65.0	75.0	15 / 30	50 / 100
AL29NEG030003000	3	80.0	89.0	15 / 30	50 / 100
AL29NEG040003000	4	99.0	110.0	15 / 30	50 / 100
AL29NEG060002000	6	140.0	155.0	10 / 20	20 / 50
AL29NEG080002000	8	180.0	200.0	10 / 20	20 / 50
AL29NEG100001000	10	228.0	250.0	10	25



Tolerance: +/- 3%  
Specifications and product presentations are subject to change without prior notice.

## FIBRA ÓPTICA

Code: AL30  
Line Color: Orange

### Characteristics

**Slotted hose** allowing for easy threading of conductors and reducing installation time. Lightweight and flexible hose made of plasticized PVC with a rigid shock-resistant PVC spiral reinforcement, making it very flexible. Resistant to atmospheric agents and many chemicals, with excellent insulating properties.

### Application

- To protect electrical wiring and optical fiber for electrical installations

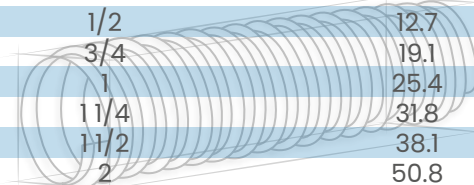
## Technical Information

Smooth internal and external surface

**Working temperature:**  
from 14°F to 122°F

**Bending radius**  
5 times its interior diameter.

Product Code	Commercial Size	Interior Diameter	Length	
	in	mm	m	ft
AL30NAR001203000	1/2	12.7	15 / 30	50 / 100
AL30NAR003403000	3/4	19.1	15 / 30	50 / 100
AL30NAR010003000	1	25.4	15 / 30	50 / 100
AL30NAR011403000	1 1/4	31.8	15 / 30	50 / 100
AL30NAR011203000	1 1/2	38.1	15 / 30	50 / 100
AL30NAR020003000	2	50.8	15 / 30	50 / 100





## FIBRA ÓPTICA LIGERA

Code: AL31  
Line Color: Crystal

Tolerance: +/- 3%  
Specifications and product presentations are subject to change without prior notice.

### Characteristics

**Slotted hose** allowing for easy threading of conductors and reducing installation time. Lightweight and flexible hose made of plasticized PVC with a rigid shock-resistant PVC spiral reinforcement, making it highly flexible. Resistant to atmospheric agents and many chemicals, with excellent insulating properties.

### Application

- To protect electrical wiring and optical fiber for electrical installations

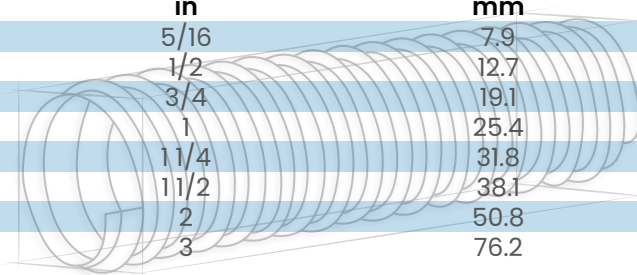
## Technical Information

**Internal surface smooth and external surface corrugated:** extremely flexible.

**Working temperature:** from 14°F to 122°F

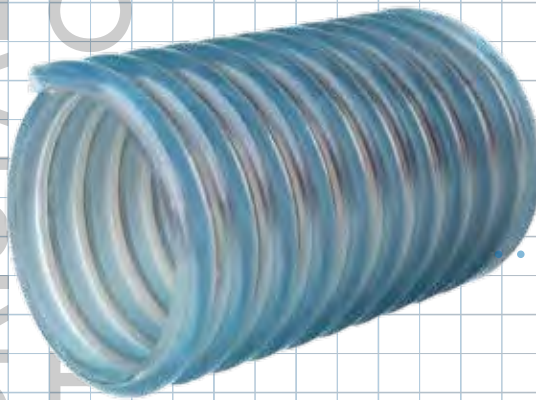
**Bending radius**  
1 time its inner diameter

Product Code	Commercial Size in	Interior Diameter mm	Length	
			m	ft
AL31CRI051603000	5/16	7.9	15 / 30	50 / 100
AL31CRI001203000	1/2	12.7	15 / 30	50 / 100
AL31CRI003403000	3/4	19.1	15 / 30	50 / 100
AL31CRI010003000	1	25.4	15 / 30	50 / 100
AL31CRI011403000	1 1/4	31.8	15 / 30	50 / 100
AL31CRI011203000	1 1/2	38.1	15 / 30	50 / 100
AL31CRI020003000	2	50.8	15 / 30	50 / 100
AL31CRI030003000	3	76.2	15 / 30	50 / 100





# HEAVY DUTY CRISTAL ATÓXICO



## HEAVY DUTY CRISTAL ATÓXICO

Code: AL32  
Line Color: Crystal with crystal blue spiral

Tolerance: +/- 3%  
Specifications and product presentations are subject to change without prior notice.

### Characteristics

Robust hose, non-toxic, made of plasticized PVC with a rigid PVC spiral reinforcement, combining the flexibility of a hose with the strength of a rigid pipe. Resistant to atmospheric agents and a wide range of chemicals.

### Application

- Transfer of dust, pellets, granular materials, and vacuum lines in paper mills.
- Transport of food, juices, jams, syrups, wines, dairy products, and soft drinks.
- Transport of beverages with an alcohol content not exceeding 28% (56° G.L.).
- Transport of dry granular materials.

### Normative references

FDA - Code of Federal Regulations  
(CFR) title 21, parts 175.300,177.1210 and 178.2010

## Technical Information

Smooth inner and corrugated outer surface

**Working temperature:**  
from 14°F to 140°F

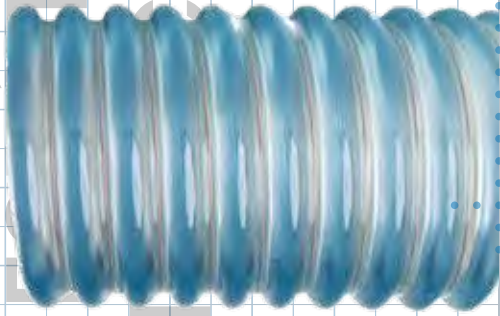
**Bending radius**  
6 times its interior diameter.

**Vacuum pressure**  
0.8 ATM = 24 in Hg

Product Code	Commercial Size in	Interior Diameter mm	Working pressure		Length	
			kg/cm <sup>2</sup> (BAR)	lb/ft <sup>2</sup> (PSI)	m	ft
AL32CEC010003000	1	25.4	3	44	15 / 30	50 / 100
AL32CEC011403000	1 1/4	31.8	3	44	15 / 30	50 / 100
AL32CEC011203000	1 1/2	38.1	3	44	15 / 30	50 / 100
AL32CEC020003000	2	51.3	3	44	15 / 30	50 / 100
AL32CEC021203000	2 1/2	63.5	2	29	15 / 30	50 / 100
AL32CEC030003000	3	77.0	2	29	15 / 30	50 / 100
AL32CEC040003000	4	101.6	2	29	15 / 30	50 / 100
AL32CEC050002000	5	127.0	2	29	10 / 20	30 / 60
AL32CEC060002000	6	152.4	2	29	10 / 20	30 / 60
AL32CEC080001000	8	203.2	1	15	10	30

## HEAVY DUTY CRISTAL CON ANTIESTÁTICO ATÓXICO

Code: AL33  
Line Color: Crystal with crystal blue spiral



Tolerance: +/- 3%  
Specifications and product presentations are subject to change without prior notice.

### Application

- Where static charge elimination is required.
- Transfer of powder, pellets, granular materials, and vacuum lines in paper mills.
- Transport of food, juices, jams, syrups, wines, dairy products, and soft drinks.
- Transport of beverages with an alcohol concentration not exceeding 28% (56° G.L.).
- Transport of dry granular materials.

### Characteristics

Robust hose, non-toxic, made of plasticized PVC with a rigid PVC spiral reinforcement, combining the flexibility of a hose with the strength of a rigid pipe. Resistant to atmospheric agents and a wide range of chemicals. Made with copper wire for static charge elimination.

### Normative references

**FDA** - Code of Federal Regulations  
**(CFR)** title 21, parts 175.300,177.1210 and 178.2010

## Technical Information

**Smooth inner and corrugated outer surface**

**Working temperature:**  
from 14°F to 140°F

**Bending radius**  
6 times its interior diameter.

**Vacuum pressure**  
0.8 ATM = 24 in Hg

Product Code	Commercial Size in	Interior Diameter mm	Working pressure		Length	
			kg/cm <sup>2</sup> (BAR)	lb/ft <sup>2</sup> (PSI)	m	ft
AL33CEC011403000	1 1/4	31.8	3	44	15 / 30	50 / 100
AL33CEC011203000	1 1/2	38.1	3	44	15 / 30	50 / 100
AL33CEC020003000	2	51.3	3	44	15 / 30	50 / 100
AL33CEC021203000	2 1/2	63.5	2	29	15 / 30	50 / 100
AL33CEC030003000	3	77.0	2	29	15 / 30	50 / 100
AL33CEC040003000	4	101.6	2	29	15 / 30	50 / 100
AL33CEC050002000	5	127.0	2	29	10 / 20	30 / 60
AL33CEC060002000	6	152.4	2	29	10 / 20	30 / 60

HIDROTEC



## HIDROTEC

Code: AL34  
Line Color: White

Tolerance: +/- 3%

Specifications and product presentations are subject to change without prior notice.

### Characteristics

Durable hose, made with flexible PVC and rigid shock-resistant PVC reinforcement; providing the flexibility of a hose and the solidity of a rigid pipe. Resistant to atmospheric agents and chemicals.

**Smooth internal and external surface (1/2" and 4"):** facilitates clamp adjustment.

### Normative references

External diameters from 1/2" to 3" comply with IAPMO PS 33 - 2010c / NSF 50 standards.

### Application

- Ideal for replacing traditional pipes in installations for hot tubs, swimming pools, drainage lines, and peripheral hydraulic systems.

## Technical Information

Smooth internal and external surface

Working temperature:  
from 5°F to 149°F

Product Code	Commercial Size in	Interior Diameter mm		Working pressure		MBR in	Length	
		min	max	kg/cm <sup>2</sup> (BAR)	lb/ft <sup>2</sup> (PSI)		m	ft
AL34BLA001203000	1/2	21.3	21.8	7	101	2.0	15 / 30	50 / 100
AL34BLA003403000	3/4	26.6	27.1	7	101	2.0	15 / 30	50 / 100
AL34BLA010003000	1	33.3	33.9	7	101	3.0	15 / 30	50 / 100
AL34BLA011403000	1 1/4	42.1	42.6	6	86	3.0	15 / 30	50 / 100
AL34BLA011203000	1 1/2	48.2	48.7	5	72	5.0	15 / 30	50 / 100
AL34BLA020003000	2	60.2	60.8	5	72	8.0	15 / 30	50 / 100
AL34BLA021203000	2 1/2	69.9	70.5	5	72	8.0	15 / 30	50 / 100
AL34BLA030003000	3	88.8	89.4	5	72	8.0	15 / 30	50 / 100
AL34BLA040003000	4	114.3	114.9	5	72	8.0	15 / 30	50 / 100



## HOSPITAL ATÓXICO

Code: AL35  
Line Color: Crystal with white spiral

Tolerance: +/- 3%  
Specifications and product presentations are subject to change without prior notice.

### Application

- Used in hospitals (inhalotherapy)
- Transport of gases where a non-toxic grade is required

### Characteristics

Very flexible and durable hose made of plasticized PVC with a rigid shock-resistant PVC spiral reinforcement.

Resistant to atmospheric agents and chemicals.

Its design prevents clogging and crushing.

Extremely lightweight. Should be sterilized using gases.

### Normative references

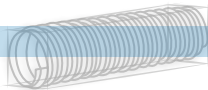
**FDA** - Code of Federal Regulations  
**(CFR)** title 21, parts 175.300,177.1210 and 178.2010

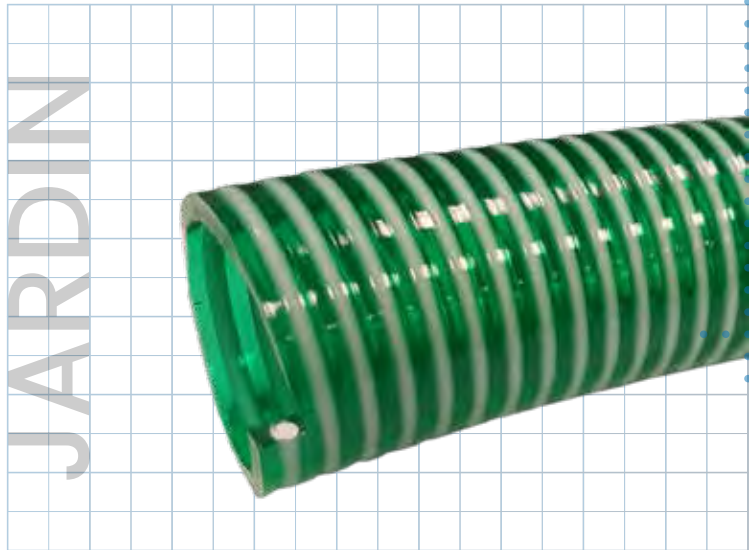
## Technical Information

Smooth inner and corrugated outer surface

**Working temperature:**  
from 14°F to 122°F

Product Code	Commercial Size		Interior Diameter	Length	
	in	mm		m	ft
AL35CEB005800610	5/8	15.9	6.10	25	
AL35CEB007800610	7/8	22.2	6.10	25	





## JARDIN

Code: AL36  
Line Color: Crystal green with white spiral

Tolerance: +/- 3%

Specifications and product presentations are subject to change without prior notice.

### Application

- Mainly recommended for irrigation, as its flexibility facilitates movement while the rigid reinforcement prevents bending or collapsing, ensuring uninterrupted irrigation.

### Characteristics

Very flexible and durable hose made of plasticized PVC with a rigid shock-resistant PVC spiral reinforcement, providing the flexibility of a hose and the solidity of a rigid pipe.

Resistant to suction and pressure.

Good resistance to atmospheric agents and a wide range of chemicals.

Its design prevents clogging and crushing.

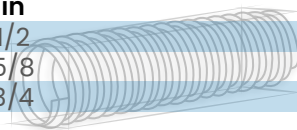
## Technical Information

Smooth internal and external surface

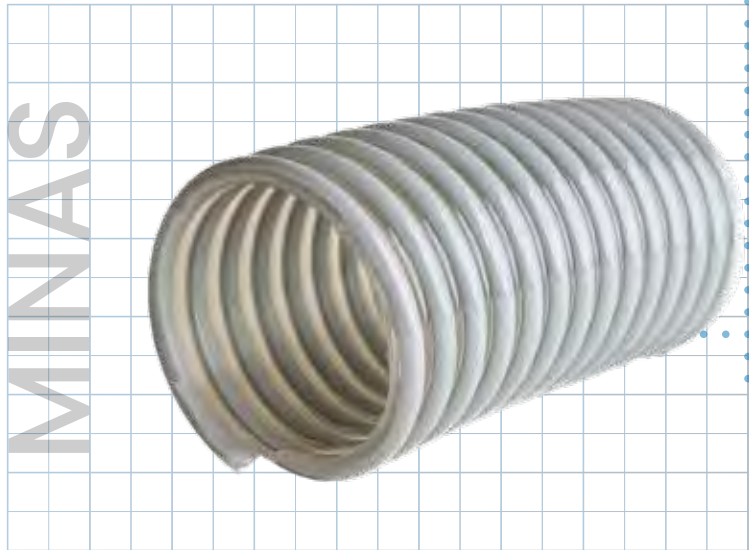
Working temperature:  
from 14°F to 131°F

Bending radius  
5 times its interior diameter.

Product Code	Commercial Size		Interior Diameter mm	Length	
	in			m	ft
AL36CVB001203000	1/2		12.7	10 / 30	30 / 100
AL36CVB005803000	5/8		15.9	10 / 30	30 / 100
AL36CVB003403000	3/4		19.1	10 / 30	30 / 100







Tolerance: +/- 3%  
Specifications and product presentations are subject to change without prior notice.

## MINAS

Code: AL37  
Line Color: Crystal with gray spiral

### Characteristics

Light and flexible hose made of high molecular weight plasticized PVC with a rigid shock-resistant PVC spiral reinforcement, making it very flexible.

Resistant to atmospheric agents and a wide range of chemicals.

### Application

- For medium suction and/or transfer.
- For waste processing pumps, construction, and mining.
- Handling slurries, gold dredging, and irrigation lines.

## Technical Information

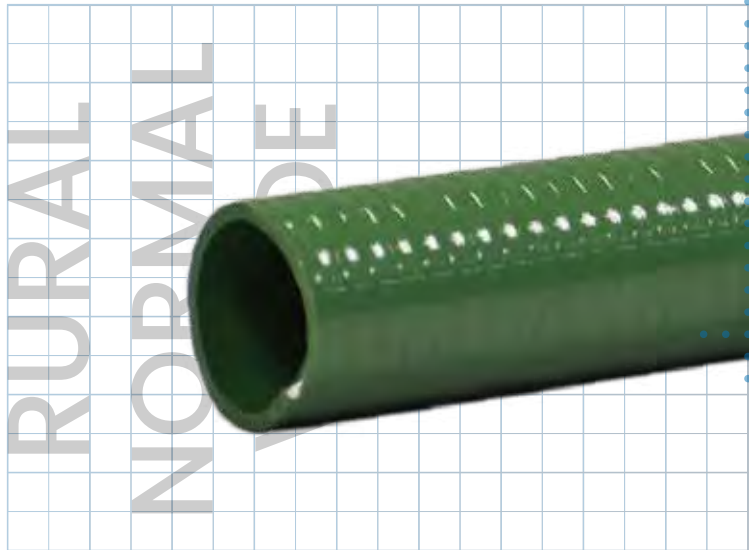
**Internal surface smooth and external surface corrugated:** extremely flexible.

**Bending radius**  
5 times its interior diameter.

**Working temperature:**  
from -4°F to 150.8°F

**Vacuum pressure**  
1 ATM = 30 in Hg

Product Code	Commercial Size in	Interior Diameter mm	Working pressure		Length	
			kg/cm <sup>2</sup> (BAR)	lb/ft <sup>2</sup> (PSI)	m	ft
AL37CEG010003000	1	25.4	6	86	15 / 30	50 / 100
AL37CEG011403000	1 1/4	31.8	5	72	15 / 30	50 / 100
AL37CEG011203000	1 1/2	38.1	5	72	15 / 30	50 / 100
AL37CEG020003000	2	50.8	4	58	15 / 30	50 / 100
AL37CEG021203000	2 1/2	63.5	4	58	15 / 30	50 / 100
AL37CEG030003000	3	76.2	4	50	15 / 30	50 / 100
AL37CEG040003000	4	101.6	4	50	15 / 30	50 / 100
AL37CEG050002000	5	127.0	3	36	10 / 20	30 / 60
AL37CEG060002000	6	152.4	3	36	10 / 20	30 / 60
AL37CEG080001000	8	203.2	2	29	10	30



## RURAL NORMAL VERDE

Code: AL38  
Line Color: Green

Tolerance: +/- 3%

Specifications and product presentations are subject to change without prior notice.

### Application

- Suction and discharge.
- Agricultural irrigation.
- Water, fertilizer, manure, and pesticide suction and pressure.

### Characteristics

Robust hose made of plasticized PVC with rigid shock-resistant spiral reinforcement, offering the flexibility of a hose and the strength of a rigid pipe. Good resistance to suction and pressure.

Resistant to atmospheric agents and many chemicals.

**Smooth internal and external surface (1/2" to 3" and 10"):** facilitates clamp adjustment.

**Smooth internal and corrugated external surface (3 1/2" to 8"):** enhances flexibility.

## Technical Information

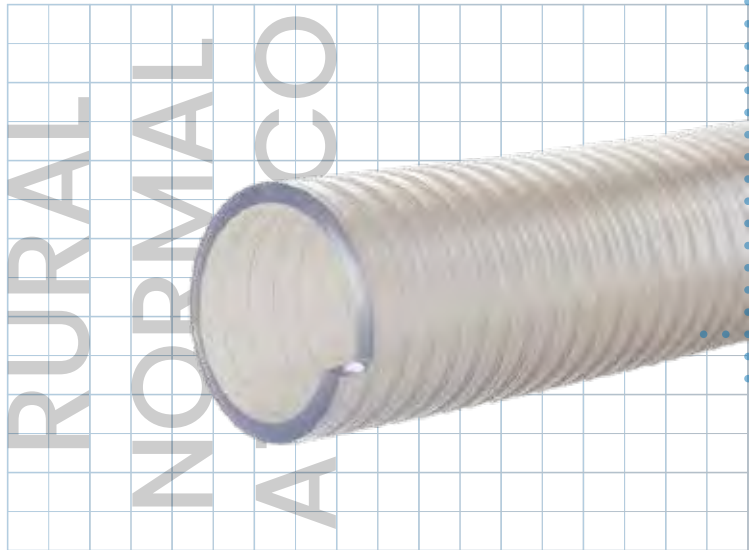
Smooth internal and external surface  
Smooth inner and corrugated outer surface

Working temperature:  
from 14°F to 140°F

Vacuum pressure  
0.8 ATM = 24 in Hg

Product Code	Commercial	Interior	Working pressure		Bend radius	Length	
	Size	Diameter	kg/cm <sup>2</sup>	lb/ft <sup>2</sup>		m	ft
	in	mm	(BAR)	(PSI)	in		
AL38VER001203000	1/2	12.7	9	131	2.5	15 / 30	50 / 100
AL38VER005803000	5/8	15.9	9	131	3.0	15 / 30	50 / 100
AL38VER003403000	3/4	19.1	7	102	3.5	15 / 30	50 / 100
AL38VER007803000	7/8	22.2	7	102	4.5	15 / 30	50 / 100
AL38VER010003000	1	25.4	7	102	5.0	15 / 30	50 / 100
AL38VER011403000	1 1/4	31.8	6	87	6.5	15 / 30	50 / 100
AL38VER011203000	1 1/2	38.1	6	87	7.5	15 / 30	50 / 100
<b>AL38VER020003000</b>	<b>*2</b>	<b>50.8</b>	<b>5</b>	<b>73</b>	<b>10.0</b>	<b>15 / 30</b>	<b>50 / 100</b>
AL38V85020003000	2	50.8	5	73	10.0	15 / 30	50 / 100
AL38VER021203000	2 1/2	63.5	5	73	12.5	15 / 30	50 / 100
AL38VER030003000	3	76.2	5	73	15.0	15 / 30	50 / 100
AL38VER031203000	3 1/2	88.9	5	73	17.5	15 / 30	50 / 100
AL38VER040003000	4	101.6	4	58	20.0	15 / 30	50 / 100
AL38VER050002000	5	127.0	3	44	25.0	10 / 20	20 / 25
AL38VER060002000	6	152.4	3	44	30.0	10 / 20	20 / 25
AL38VER080001000	8	203.2	2	29	40.0	10	20
AL38VER100000610	10	254.0	2	29	105.0	6.10	20

*\*if you require the product 2" in weight 750 g/m consult with the seller, apply restrictions*



## RURAL NORMAL ATÓXICO

Code: AL39  
Line Color: Green

Tolerance: +/- 3%

Specifications and product presentations are subject to change without prior notice.

### Application

- Suction and discharge where non-toxic grade is required.
- Water suction and pressure where non-toxic grade is needed.

### Characteristics

Robust, non-toxic hose made of plasticized PVC with rigid shock-resistant spiral reinforcement, combining the flexibility of a hose with the strength of a rigid pipe. Good resistance to suction and pressure. Resistant to atmospheric agents and many chemicals.

**Smooth internal and external surface (1/2" to 3" and 10"):** facilitates clamp adjustment.

**Smooth internal and corrugated external surface (3 1/2" to 8"):** improves flexibility

### Normative references

FDA - Code of Federal Regulations (CFR) title 21, parts 175.300,177.1210 and 178.2010.

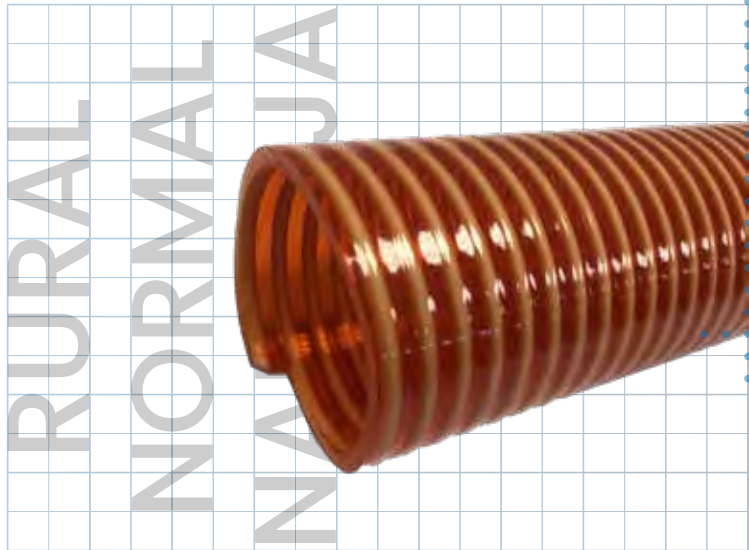
## Technical Information

**Smooth internal and external surface**  
**Smooth inner and corrugated outer surface**

**Working temperature:**  
from 14°F to 140°F

**Vacuum pressure**  
0.8 ATM = 24 in Hg

Product Code	Commercial	Interior	Working pressure		Bend radius	Length	
	Size	Diameter	kg/cm <sup>2</sup>	lb/ft <sup>2</sup>		in	m
	in	mm	(BAR)	(PSI)			
AL39CRI001203000	1/2	12.7	9	131	2.5	15 / 30	50 / 100
AL39CRI005803000	5/8	15.9	9	131	3.0	15 / 30	50 / 100
AL39CRI003403000	3/4	19.1	7	102	3.5	15 / 30	50 / 100
AL39CRI007803000	7/8	22.2	7	102	4.5	15 / 30	50 / 100
AL39CRI010003000	1	25.4	7	102	5.0	15 / 30	50 / 100
AL39CRI011403000	1 1/4	31.8	6	87	6.5	15 / 30	50 / 100
AL39CRI011203000	1 1/2	38.1	6	87	7.5	15 / 30	50 / 100
AL39V85020003000	2	50.8	5	73	10.0	15 / 30	50 / 100
AL39CRI021203000	2 1/2	63.5	5	73	12.5	15 / 30	50 / 100
AL39CRI030003000	3	76.2	5	73	15.0	15 / 30	50 / 100
AL39CRI031203000	3 1/2	88.9	5	73	17.5	15 / 30	50 / 100
AL39CRI040003000	4	101.6	4	58	20.0	15 / 30	50 / 100
AL39CRI050002000	5	127.0	3	44	25.0	10 / 20	20 / 25
AL39CRI060002000	6	152.4	3	44	30.0	10 / 20	20 / 25
AL39CRI080001000	8	203.2	2	29	40.0	10	20
AL39CRI100000610	10	254.0	2	29	105.0	6.10	20



## RURAL NORMAL NARANJA

Code: AL40  
Line Color: Orange

Tolerance: +/- 3%

Specifications and product presentations are subject to change without prior notice.

### Application

- Suction and discharge.
- Agricultural irrigation.
- Water, fertilizer, manure, and pesticide suction and pressure.

### Characteristics

Robust hose made of plasticized PVC with rigid shock-resistant spiral reinforcement, offering the flexibility of a hose and the strength of a rigid pipe.

Good resistance to suction and pressure.

Resistant to atmospheric agents and many chemicals.

**Smooth internal and external surface (1/2" to 3" and 10"):** facilitates clamp adjustment.

**Smooth internal and corrugated external surface (3 1/2" to 8"):** enhances flexibility.

## Technical Information

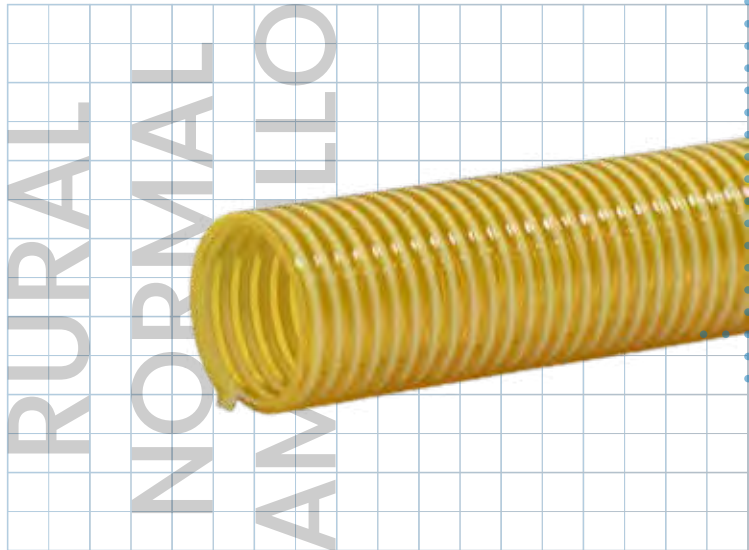
Smooth internal and external surface  
Smooth inner and corrugated outer surface

Working temperature:  
from 14°F to 140°F

Vacuum pressure  
0.8 ATM = 24 in Hg

Product Code	Commercial	Interior	Working pressure		Bend radius	Length	
	Size	Diameter	kg/cm <sup>2</sup>	lb/ft <sup>2</sup>		in	m
	in	mm	(BAR)	(PSI)			
AL40NAR001203000	1/2	12.7	9	131	2.5	15 / 30	50 / 100
AL40NAR005803000	5/8	15.9	9	131	3.0	15 / 30	50 / 100
AL40NAR003403000	3/4	19.1	7	102	3.5	15 / 30	50 / 100
AL40NAR007803000	7/8	22.2	7	102	4.5	15 / 30	50 / 100
AL40NAR010003000	1	25.4	7	102	5.0	15 / 30	50 / 100
AL40NAR011403000	1 1/4	31.8	6	87	6.5	15 / 30	50 / 100
AL40NAR011203000	1 1/2	38.1	6	87	7.5	15 / 30	50 / 100
AL40NAR020003000	2	50.8	5	73	10.0	15 / 30	50 / 100
AL40NAR021203000	2 1/2	63.5	5	73	12.5	15 / 30	50 / 100
AL40NAR030003000	3	76.2	5	73	15.0	15 / 30	50 / 100
AL40NAR031203000	3 1/2	88.9	5	73	17.5	15 / 30	50 / 100
AL40NAR040003000	4	101.6	4	58	20.0	15 / 30	50 / 100
AL40NAR050002000	5	127.0	3	44	25.0	10 / 20	20 / 25
AL40NAR060002000	6	152.4	3	36	30.0	10 / 20	20 / 25
AL40NAR080001000	8	203.2	2	29	40.0	10	20
AL40NAR100000610	10	254.0	2	29	105.0	6.10	20





## RURAL NORMAL AMARILLO

Code: AL41  
Line Color: Yellow

Tolerance: +/- 3%

Specifications and product presentations are subject to change without prior notice.

### Application

- Suction and discharge.
- Agricultural irrigation.
- Water, fertilizer, manure, and pesticide suction and pressure.

### Characteristics

Robust hose made of plasticized PVC with rigid shock-resistant spiral reinforcement, combining the flexibility of a hose with the strength of a rigid pipe.

Good resistance to suction and pressure.

Resistant to atmospheric agents and many chemicals.

**Smooth internal and external surface (1/2" to 3" and 10"):** facilitates clamp adjustment.

**Smooth internal and corrugated external surface (3 1/2" to 8"):** enhances flexibility.

## Technical Information

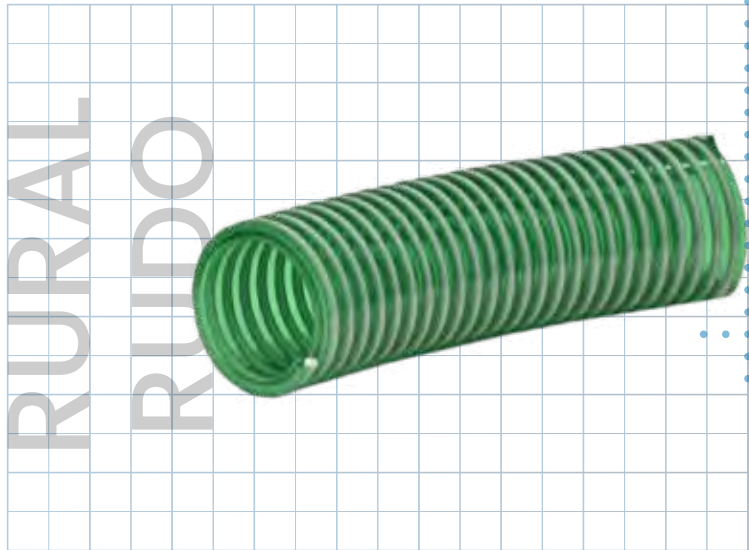
Smooth internal and external surface  
Smooth inner and corrugated outer surface

Working temperature:  
from 14°F to 140°F

Vacuum pressure  
0.8 ATM = 24 in Hg

Product Code	Commercial	Interior	Working pressure		Bend radius	Length	
	Size	Diameter	kg/cm <sup>2</sup>	lb/ft <sup>2</sup>		in	m
	in	mm	(BAR)	(PSI)			
AL41AMA001203000	1/2	12.7	9	131	2.5	15 / 30	50 / 100
AL41AMA005803000	5/8	15.9	9	131	3.0	15 / 30	50 / 100
AL41AMA003403000	3/4	19.1	7	102	3.5	15 / 30	50 / 100
AL41AMA007803000	7/8	22.2	7	102	4.5	15 / 30	50 / 100
AL41AMA010003000	1	25.4	7	102	5.0	15 / 30	50 / 100
AL41AMA011403000	1 1/4	31.8	6	87	6.5	15 / 30	50 / 100
AL41AMA011203000	1 1/2	38.1	6	87	7.5	15 / 30	50 / 100
AL41AMA020003000	2	50.8	5	73	10.0	15 / 30	50 / 100
AL41AMA021203000	2 1/2	63.5	5	73	12.5	15 / 30	50 / 100
AL41AMA030003000	3	76.2	5	73	15.0	15 / 30	50 / 100
AL41AMA031203000	3 1/2	88.9	5	73	17.5	15 / 30	50 / 100
AL41AMA040003000	4	101.6	4	58	20.0	15 / 30	50 / 100
AL41AMA050002000	5	127.0	3	44	25.0	10 / 20	20 / 50
AL41AMA060002000	6	152.4	3	36	30.0	10 / 20	20 / 50
AL41AMA080001000	8	203.2	2	29	40.0	10	20
AL41AMA100000610	10	254.0	2	29	105.0	6.10	20





## RURAL RUDO

Code: AL42  
Line Color: Crystal green with white spiral

Tolerance: +/- 3%  
Specifications and product presentations are subject to change without prior notice.

### Application

- Especially designed for heavy-duty and continuous agricultural irrigation.
- Suction and pressure of slurries, wood pulps, seeds, manures, and more.

### Characteristics

Light and flexible hose made of plasticized PVC with rigid shock-resistant PVC spiral reinforcement, providing the flexibility of a hose and the strength of a rigid pipe.

Good resistance to suction and pressure.

Resistant to atmospheric agents and many chemicals.

**Smooth internal and external surface (1" to 3"):** facilitates clamp adjustment.

**Smooth internal and corrugated external surface (4" to 8"):** enhances flexibility.

## Technical Information

**Smooth internal and external surface**  
**Smooth inner and corrugated outer surface**

**Bending radius**  
7 times its interior diameter.

**Working temperature:**  
from 5°F to 149°F

**Vacuum pressure**  
1.0 ATM = 30 in Hg

Product Code	Commercial Size in	Interior Diameter mm	Working pressure		Length	
			kg/cm <sup>2</sup> (BAR)	lb/ft <sup>2</sup> (PSI)	m	ft
AL42CVB010003000	1	25.4	9	131	15 / 30	50 / 100
AL42CVB011403000	1 1/4	31.8	8	116	15 / 30	50 / 100
AL42CVB011203000	1 1/2	38.1	8	116	15 / 30	50 / 100
AL42CVB020003000	2	50.8	7	102	15 / 30	50 / 100
AL42CVB021203000	2 1/2	63.5	7	102	15 / 30	50 / 100
AL42CVB030003000	3	76.2	7	102	15 / 30	50 / 100
AL42CVB040003000	4	101.6	7	102	15 / 30	50 / 100
AL42CVB050002000	5	127.0	6	87	10 / 20	20 / 25
AL42CVB060002000	6	152.4	6	87	10 / 20	20 / 25
AL42CVB080001000	8	203.2	5	73	10	20

# SUCTION CON ANTIESTÁTICO ATÓXICO

## SUCTION CON ANTIESTÁTICO ATÓXICO

Code: AL43  
Line Color: Crystal



Tolerance: +/- 3%

Specifications and product presentations are subject to change without prior notice.

### Normative references

FDA - Code of Federal Regulations (CFR) title 21, parts 175.300,177.1210 and 178.2010.

### Application

- Movement of grains, pellets, and sands
- Especially suited for materials that generate static electricity

### Characteristics

Robust, non-toxic hose made of plasticized PVC with rigid shock-resistant spiral reinforcement, combining the flexibility of a hose with the strength of a rigid pipe. Resistant to atmospheric agents and many chemicals.

Made with copper wire to prevent static electricity buildup and maintain continuous material flow.

**Smooth internal and external surface (1" to 3"):** facilitates clamp adjustment.

**Smooth internal and corrugated external surface (3 1/2" to 6"):** enhances flexibility.

## Technical Information

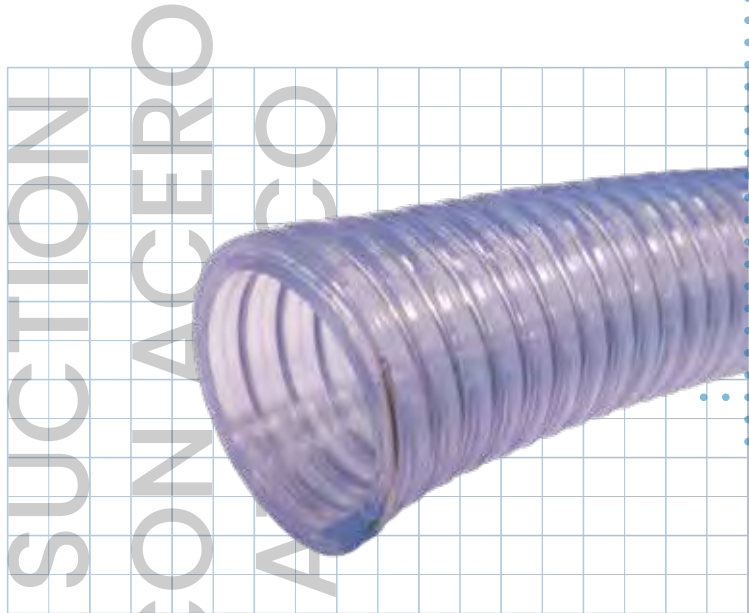
Smooth internal and external surface  
Smooth inner and corrugated outer surface

Working temperature:  
from 14°F to 140°F

Bending radius  
5 times its interior diameter.

Vacuum pressure  
0.8 ATM = 24 in Hg

Product Code	Commercial Size in	Interior Diameter mm	Working pressure		Length	
			kg/cm <sup>2</sup> (BAR)	lb/ft <sup>2</sup> (PSI)	m	ft
AL43CRI010003000	1	25.4	7	102	15 / 30	50 / 100
AL43CRI011403000	1 1/4	31.8	6	87	15 / 30	50 / 100
AL43CRI011203000	1 1/2	38.1	6	87	15 / 30	50 / 100
AL43CRI020003000	2	50.8	5	73	15 / 30	50 / 100
AL43CRI021203000	2 1/2	63.5	5	73	15 / 30	50 / 100
AL43CRI030003000	3	76.2	5	73	15 / 30	50 / 100
AL43CRI031203000	3 1/2	88.9	5	73	15 / 30	50 / 100
AL43CRI040003000	4	101.6	5	73	15 / 30	50 / 100
AL43CRI050002000	5	127.0	4	58	10 / 20	30 / 60
AL43CRI060002000	6	152.4	4	58	10 / 20	30 / 60



## SUCTION CON ACERO ATÓXICO

Code: AL44  
Line Color: Crystal

Tolerance: +/- 3%  
Specifications and product presentations are subject to change without prior notice.

### Characteristics

Robust, non-toxic hose made of plasticized PVC with rigid shock-resistant spiral reinforcement, offering the flexibility of a hose and the strength of a rigid pipe.

The steel reinforcement prevents static electricity buildup and helps maintain continuous material flow. Resistant to atmospheric agents and chemicals.

### Normative references

**FDA** - Code of Federal Regulations  
**(CFR)** title 21, parts 175.300,177.1210 and 178.2010.

### Application

- Ideal for use in constant curvature with vacuum pumps.
- For pressure or suction of various industrial and food products, such as medications, food, and dry, granular, or pelletized materials.

## Technical Information

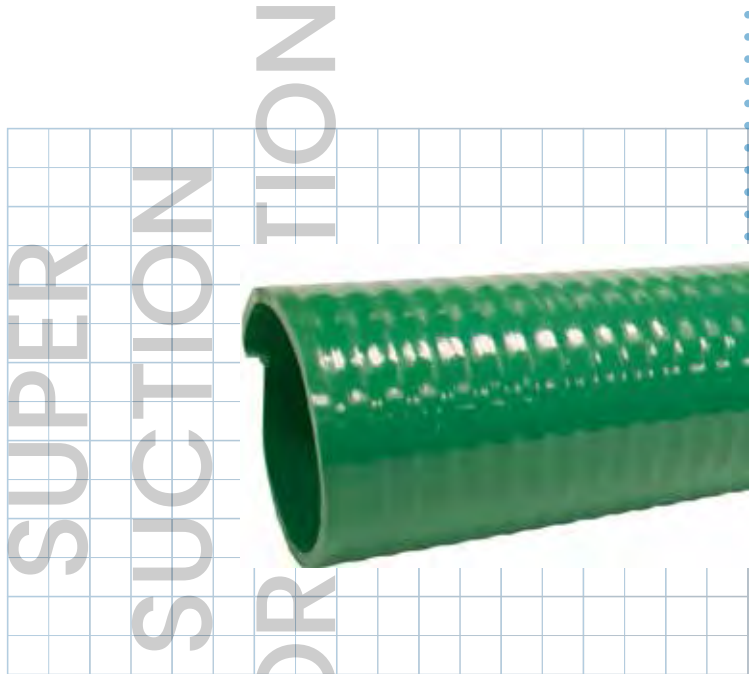
**Smooth internal and external surface**

**Working temperature:**  
from 14°F to 149°F

**Bending radius**  
7 times its interior diameter.

**Vacuum pressure**  
1.0 ATM = 30 in Hg

Product Code	Commercial Size in	Interior Diameter mm	Working pressure		Length	
			kg/cm <sup>2</sup> (BAR)	lb/ft <sup>2</sup> (PSI)	m	ft
AL44CRI005803000	5/8	15.9	8	115	15 / 30	50 / 100
AL44CRI003403000	3/4	19.1	8	115	15 / 30	50 / 100
AL44CRI010003000	1	25.4	8	115	15 / 30	50 / 100
AL44CRI011403000	1 1/4	31.8	7	101	15 / 30	50 / 100
AL44CRI011203000	1 1/2	38.1	7	101	15 / 30	50 / 100
AL44CRI020003000	2	50.8	6	86	15 / 30	50 / 100
AL44CRI021203000	2 1/2	63.5	6	86	15 / 30	50 / 100
AL44CRI030003000	3	76.2	6	86	15 / 30	50 / 100
AL44CRI040003000	4	101.6	6	86	15 / 30	50 / 100



## SUPER SUCTION CORPORATION

Code: AL45  
Line Color: Green GY

Tolerance: +/- 3%  
Specifications and product presentations are subject to change without prior notice.

### Application

- Suction and discharge.
- Agricultural irrigation.
- Suction and pressure of water, fertilizer, manure, and pesticides.

### Characteristics

Robust hose made of plasticized PVC with rigid shock-resistant spiral reinforcement, providing the flexibility of a hose and the strength of a rigid pipe.

Good resistance to suction and pressure. Resistant to atmospheric agents and many chemicals.

**Smooth internal and external surface (1/2" to 3" and 10"):** facilitates clamp adjustment.

**Smooth internal and corrugated external surface (3 1/2" to 8"):** enhances flexibility.

## Technical Information

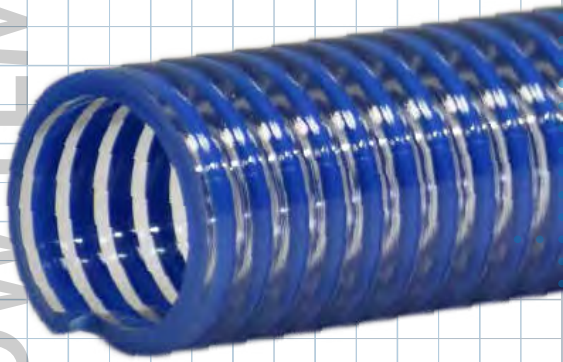
Smooth internal and external surface  
Smooth inner and corrugated outer surface

Working temperature:  
from 14°F to 149°F

Burst pressure  
2.5 times the working pressure

Product Code	Commercial Size in	Interior Diameter mm	Working pressure		vacuum pressure (Hg)		Bend radius in	Length	
			kg/cm <sup>2</sup> (BAR)	lb/ft <sup>2</sup> (PSI)	in	mm		m	ft
AL45VGY001203000	1/2	12.7	10	145	30	762	2.0	15 / 30	50 / 100
AL45VGY005803000	5/8	15.9	10	145	30	762	2.5	15 / 30	50 / 100
AL45VGY003403000	3/4	19.1	9	131	30	762	3.0	15 / 30	50 / 100
AL45VGY007803000	7/8	22.2	9	131	30	762	3.5	15 / 30	50 / 100
AL45VGY010003000	1	25.4	8	116	30	762	4.0	15 / 30	50 / 100
AL45VGY011403000	1 1/4	31.8	7	102	30	762	5.0	15 / 30	50 / 100
AL45VGY011203000	1 1/2	38.1	7	102	30	762	6.0	15 / 30	50 / 100
AL45VGY020003000	2	50.8	6	87	30	762	8.0	15 / 30	50 / 100
AL45VGY021203000	2 1/2	63.5	5	73	30	762	10.0	15 / 30	50 / 100
AL45VGY030003000	3	76.2	5	73	30	762	12.0	15 / 30	50 / 100
AL45VGY031203000	3 1/2	88.9	4	58	29	737	14.0	15 / 30	50 / 100
AL45VGY040003000	4	101.6	4	58	29	737	16.0	15 / 30	50 / 100
AL45VGY050002000	5	127.0	4	58	29	737	22.0	10 / 20	20 / 25
AL45VGY060002000	6	152.4	3	44	29	737	25.0	10 / 20	20 / 25
AL45VGY080001000	8	203.2	3	44	20	508	35.0	10	20
AL45VGY100000610	10	254.0	2	29	20	508	100.0	6.10	20

# SUCTION LOW TEMPS



## SUCTION LOW TEMPS

Code: AL46  
Line Color: Crystal with blue spiral

Tolerance: +/- 3%

Specifications and product presentations are subject to change without prior notice.

### Application

- For suction and transfer of water
- Construction, mining, agriculture, and irrigation lines in sub-zero temperatures

### Characteristics

Light and flexible hose made of plasticized PVC with rigid shock-resistant PVC spiral reinforcement. Made with high molecular weight PVC and improved compounds, providing greater flexibility at low temperatures and increased abrasion resistance compared to standard PVC.

**Smooth internal and external surface (3/4" to 3"):** facilitates clamp adjustment.

**Smooth internal and corrugated external surface (3" to 6"):** enhances flexibility.

## Technical Information

**Smooth internal and external surface**  
**Smooth inner and corrugated outer surface**

**Working temperature:**  
from -4°F to 150.8°F

**Bending radius**  
5 times its interior diameter.

**Vacuum pressure**  
1.0 ATM = 30 in Hg

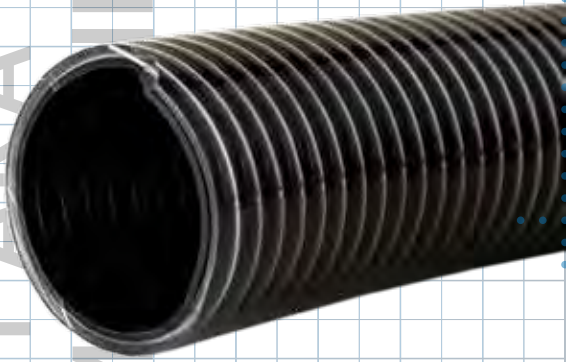
Product Code	Commercial Size in	Interior Diameter mm	Working pressure		Length	
			kg/cm <sup>2</sup> (BAR)	lb/ft <sup>2</sup> (PSI)	m	ft
AL46CEA003403000	3/4	19.0	8	115	15 / 30	50 / 100
AL46CEA010003000	1	25.4	6	86	15 / 30	50 / 100
AL46CEA011403000	1 1/4	31.8	5	72	15 / 30	50 / 100
AL46CEA011203000	1 1/2	38.1	5	72	15 / 30	50 / 100
AL46CEA020003000	2	50.8	4	58	15 / 30	50 / 100
AL46CEA021203000	2 1/2	63.5	4	58	15 / 30	50 / 100
AL46CEA030003000	3	76.2	4	50	15 / 30	50 / 100
AL46CEA040003000	4	101.6	4	50	15 / 30	50 / 100
AL46CEA050002000	5	127.0	3	36	10 / 20	30 / 60
AL46CEA060002000	6	152.4	3	36	10 / 20	30 / 60



# TRANSMETAL PARA COMBUSTIBLES

## TRANSMETAL PARA COMBUSTIBLES

Code: AL47  
Line Color: Crystal black



Tolerance: +/- 3%  
Specifications and product presentations are  
subject to change without prior notice.

### Characteristics

Light and flexible hose made of plasticized PVC with steel reinforcement, offering the flexibility of a hose and the strength of a rigid pipe. Smooth internal surface.

Good resistance to suction and pressure.

Resistant to atmospheric agents and many chemicals.

Ideal for handling oils and gasoline.

### Application

- For use in the transfer of fuels and oils

## Technical Information

**Smooth inner and outer surface**

**Working temperature:**  
from 5°F to 149°F

**Bending radius**  
7 times its interior diameter.

**Vacuum pressure**  
0.8 ATM = 24 in Hg

Product Code	Commercial Size in	Interior Diameter mm	Working pressure		Length	
			kg/cm <sup>2</sup> (BAR)	lb/ft <sup>2</sup> (PSI)	m	ft
AL47CNE003403000	3/4	19.1	8	115	15 / 30	50 / 100
AL47CNE010003000	1	25.4	8	115	15 / 30	50 / 100
AL47CNE011403000	1 1/4	31.8	7	101	15 / 30	50 / 100
AL47CNE011203000	1 1/2	38.1	7	101	15 / 30	50 / 100
AL47CNE020003000	2	50.8	6	86	15 / 30	50 / 100
AL47CNE021203000	2 1/2	63.5	6	86	15 / 30	50 / 100
AL47CNE030003000	3	76.2	6	86	15 / 30	50 / 100
AL47CNE040003000	4	101.6	6	86	15 / 30	50 / 100

# ALATHANE DUCTING ATÓXICO

## ALATHANE DUCTING ATÓXICO



Code: AL48  
Line Color: Crystal

Tolerance: +/- 3%  
Specifications and product presentations are subject to change without prior notice.

### Application

- Suction and transport of materials in the pharmaceutical, food, and wood industries.
- Abrasive solids: powders, fibers, chips, and granules; gaseous and liquid media for dust removal.
- In suction plants, industrial vacuums, paper suction, and textile fibers.
- Durable protective tubing.

### Characteristics

Medium weight non-toxic polyurethane hose reinforced with steel spiral.

Provides high resistance to abrasion, tear and chemical agents, high flexibility at low temperatures and good compression that allows a perfect accommodation even in difficult spaces.

### Normative References

**FDA** - Code of Federal Regulations  
**(CFR)** title 21, parts 175.300,177.1210 and 178.2010.

## Technical Information

Smooth inner and corrugated outer surface

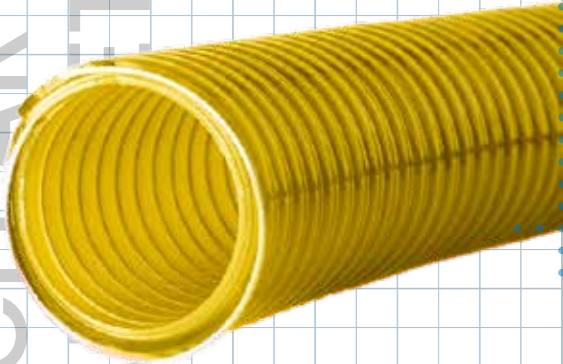
**Continuous flow working temperature:**  
From -40°F to 194°F

**Intermittent flow working temperature:**  
From -40°F to 239°F

Product Code	Commercial Size in	Interior Diameter mm	Wall thickness mm	Wire mm	Length m
AL48CRI011201000	1 1/2	38.1	0.7	1.2	6.1 / 7.5 / 10
AL48CRI020001000	2	50.8	0.7	1.2	6.1 / 7.5 / 10
AL48CRI021201000	*2 1/2	63.5	0.8	1.5	6.1 / 7.5 / 10
AL48CRI030001000	3	76.2	0.8	1.5	6.1 / 7.5 / 10
AL48CRI031201000	*3 1/2	88.9	0.8	1.5	6.1 / 7.5 / 10
AL48CRI040001000	4	101.6	0.8	1.5	6.1 / 7.5 / 10
AL48CRI041201000	*4 1/2	114.3	0.8	1.5	6.1 / 7.5 / 10
AL48CRI050001000	5	127.0	0.8	1.5	6.1 / 7.5 / 10
AL48CRI060001000	6	152.4	0.8	1.5	6.1 / 7.5 / 10
AL48CRI080001000	*8	203.2	0.9	2.0	6.1 / 7.5 / 10
AL48CRI100001000	*10	254.0	0.9	2.0	6.1 / 7.5 / 10
AL48CRI120001000	*12	304.8	0.9	2.0	6.1 / 7.5 / 10

\*Under special request

# POLYURETHANE CLEAR TRANSMETAL



## POLYURETHANE CLEAR TRANSMETAL

Code: AL49  
Line Color: Crystal yellow

Tolerance: +/- 3%

Specifications and product presentations are subject to change without prior notice.

### Application

- Used for transfer via pneumatic systems for powders, fumes, pellets, and other dry granular materials.
- Handling of grains, seeds, and more.
- Sand recovery line.
- Metal burr recovery line in machining processes.

### Characteristics

Flexible hose with a clear polyurethane inner lining, transparent flexible PVC cover, and steel spiral reinforcement, combining hose flexibility with the strength of a rigid pipe.

**Transparent surface:** allows visual confirmation of material flow.

**Steel reinforcement:** prevents static electricity buildup and maintains continuous flow.

**Polyurethane interior:** provides high abrasion resistance.

## Technical Information

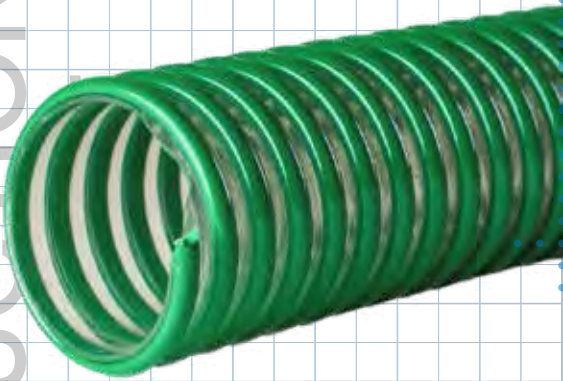
**Smooth inner and outer surface**

**Working temperature:**  
from -4°F to 194°F

**Bending radius**  
8 times its interior diameter.

**Vacuum pressure**  
0.8 ATM = 24 in Hg

Product Code	Commercial Size in	Interior Diameter mm	Working pressure		Length	
			kg/cm <sup>2</sup> (BAR)	lb/ft <sup>2</sup> (PSI)	m	ft
AL49CRA010003000	1	25.4	8	115	15 / 30	50 / 100
AL49CRA011403000	1 1/4	31.8	7	101	15 / 30	50 / 100
AL49CRA011203000	1 1/2	38.1	7	101	15 / 30	50 / 100
AL49CRA020003000	2	50.8	6	86	15 / 30	50 / 100
AL49CRA021203000	2 1/2	63.5	6	86	15 / 30	50 / 100
AL49CRA030003000	3	76.2	6	86	15 / 30	50 / 100
AL49CRA040003000	4	101.6	6	86	15 / 30	50 / 100



## POLYURETHANE SUCTION HOSE

Code: AL50  
Line Color: Crystal with green GY spiral

Tolerance: +/- 3%

Specifications and product presentations are subject to change without prior notice.

### Application

- Suction and discharge of materials requiring flexibility at low temperatures and high abrasion resistance.
- Transfer via pneumatic systems for pellets and other dry granular materials.
- Transfer of seeds and grains.
- Transfer of ice.
- Handling of liquid manure, septic tanks, hydro-excavation, and both dry and wet fertilizers.

### Characteristics

Light and flexible hose made of clear polyurethane with PVC spiral reinforcement, allowing visual confirmation of material flow and helping the operator inspect for contamination during operation.

**Smooth internal and corrugated external surface;** enhances flexibility.

**Smooth interior reduces material buildup** Offers high abrasion resistance.

## Technical Information

**Smooth inner and corrugated outer surface**

**Working temperature:**  
from -4°F to 194°F

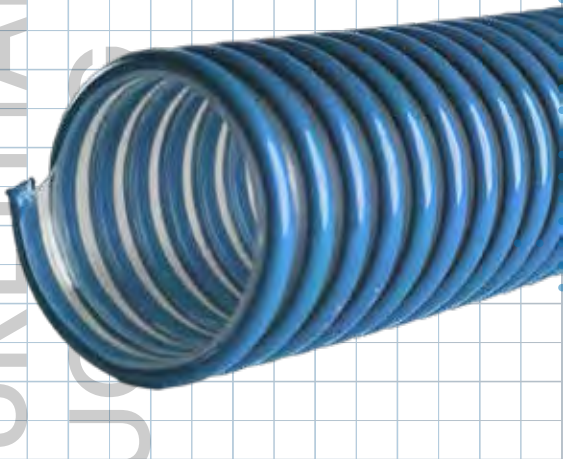
**Bending radius**  
8 times its interior diameter.

**Vacuum pressure**  
0.8 to 0.9 ATM = 24 to 27 in Hg

Product Code	Commercial Size in	Interior Diameter mm	Working pressure		Length	
			kg/cm <sup>2</sup> (BAR)	lb/ft <sup>2</sup> (PSI)	m	ft
AL50CEY020001500	2	50.8	2	29	7.5 / 15	25 / 50
AL50CEY021201500	2 1/2	63.5	2	29	7.5 / 15	25 / 50
AL50CEY030001500	3	76.2	2	29	7.5 / 15	25 / 50
AL50CEY040001500	4	101.6	2	29	7.5 / 15	25 / 50
AL50CEY050001500	5	127.0	1	14	7.5 / 15	25 / 50
AL50CEY060001500	6	152.4	1	14	7.5 / 15	25 / 50
AL50CEY080001500	8	203.2	1	14	7.5 / 15	25 / 50

## FOOD AND GRADE POLYURETHANE DUCTING

Code: AL51  
Line Color: Crystal blue



Tolerance: +/- 3%  
Specifications and product presentations are subject to change without prior notice.

### Application

- Suction, discharge, and transfer via pneumatic systems of:
  - Powders, pellets, fumes, air
  - Pharmaceutical materials
  - Other dry granular food-grade materials requiring tear resistance

### Characteristics

Light and flexible hose made from a PVC and polyurethane blend with a rigid PVC spiral. These materials allow visual confirmation of material flow and help the operator inspect for contamination during operation. The smooth interior reduces material buildup and provides quiet performance.

**Smooth internal and corrugated external surface:** enhances flexibility.

**Polyurethane interior:** offers high abrasion resistance.

### Normative References

FDA - Code of Federal Regulations (CFR) title 21, parts 175.300,177.1210 and 178.2010.

## Technical Information

**Smooth inner and corrugated outer surface**

**Working temperature:**  
from -4°F to 167°F

**Bending radius**  
8 times its interior diameter.

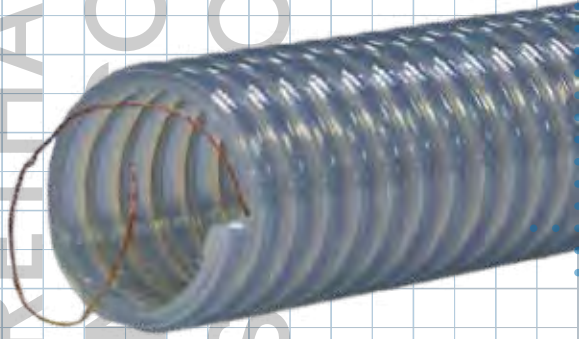
**Vacuum pressure**  
0.7 to 0.8 ATM = 21 to 24 in Hg

Product Code	Commercial Size in	Interior Diameter mm	Working pressure		Length	
			kg/cm <sup>2</sup> (BAR)	lb/ft <sup>2</sup> (PSI)	m	ft
AL51CAZ011201500	1 1/2	38.1	3	44	7.5 / 15	25 / 50
AL51CAZ020001500	2	50.8	3	44	7.5 / 15	25 / 50
AL51CAZ021201500	2 1/2	63.5	3	44	7.5 / 15	25 / 50
AL51CAZ030001500	3	76.2	3	44	7.5 / 15	25 / 50
AL51CAZ040001500	4	101.6	3	44	7.5 / 15	25 / 50
AL51CAZ050001500	5	127.0	2	29	7.5 / 15	25 / 50
AL51CAZ060001500	6	152.4	2	29	7.5 / 15	25 / 50



# FOOD AND GRADE POLYURETHANE DUCTING CON ANTIESTÁTICO

Code: AL52  
Line Color: Crystal blue



Tolerance: +/- 3%

Specifications and product presentations are subject to change without prior notice.

## Application

- Suction, discharge, and transfer via pneumatic systems of: powders, pellets, fumes, air, pharmaceutical materials, and other dry granular food-grade materials that require tear resistance and prevention of static electricity buildup.

## Normative References

FDA - Code of Federal Regulations  
(CFR) title 21, parts 175.300,177.1210 and 178.2010.

## Characteristics

Light and flexible hose made from a blend of PVC and polyurethane with a rigid PVC spiral. These materials allow visual confirmation of material flow and help the operator inspect for contamination during operation. The smooth interior reduces material buildup and provides quiet performance.

**The smooth internal and corrugated external surface:** enhances flexibility.

**The polyurethane interior:** offers high abrasion resistance, while the **copper wire** prevents static electricity buildup and helps maintain continuous material flow.

## Technical Information

Smooth inner and corrugated outer surface

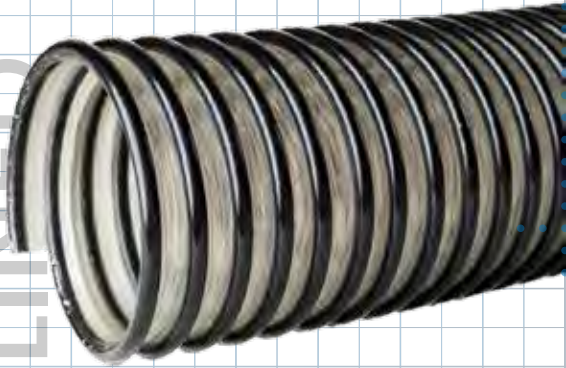
**Working temperature:**  
from -4°F to 167°F

**Bending radius**  
8 times its interior diameter.

**Vacuum pressure**  
0.7 to 0.8 ATM = 21 to 24 in Hg

Product Code	Commercial Size in	Interior Diameter mm	Working pressure		Length	
			kg/cm <sup>2</sup> (BAR)	lb/ft <sup>2</sup> (PSI)	m	ft
AL52CAZ020001500	2	50.8	3	44	7.5 / 15	25 / 50
AL52CAZ021201500	2 1/2	63.5	3	44	7.5 / 15	25 / 50
AL52CAZ030001500	3	76.2	3	44	7.5 / 15	25 / 50
AL52CAZ040001500	4	101.6	3	44	7.5 / 15	25 / 50
AL52CAZ050001500	5	127.0	2	29	7.5 / 15	25 / 50
AL52CAZ060001500	6	152.4	2	29	7.5 / 15	25 / 50

## POLYURETHANE LINED



Code: AL53  
Line Color: Crystal with black spiral

Tolerance: +/- 3%  
Specifications and product presentations are subject to change without prior notice.

### Application

- Designed for applications where severe abrasion is a critical factor.
- Transfer via pneumatic systems of pellets and other dry granular materials.
- Transfer of mulch, wood chips, seeds, grains, dry and wet fertilizers, and petroleum-based oils.

### Characteristics

Flexible hose with an abrasion-resistant polyurethane inner layer, covered externally with transparent plasticized PVC, allowing for flow confirmation, and reinforced with a rigid, anti-shock PVC spiral. Its corrugated construction enhances flexibility. Remains flexible at sub-zero temperatures. Increases lifespan and reduces operational costs compared to rubber and PVC. UV resistant.

**Smooth internal and corrugated external surface:** improves flexibility.

**Polyurethane interior:** provides high abrasion resistance.

## Technical Information

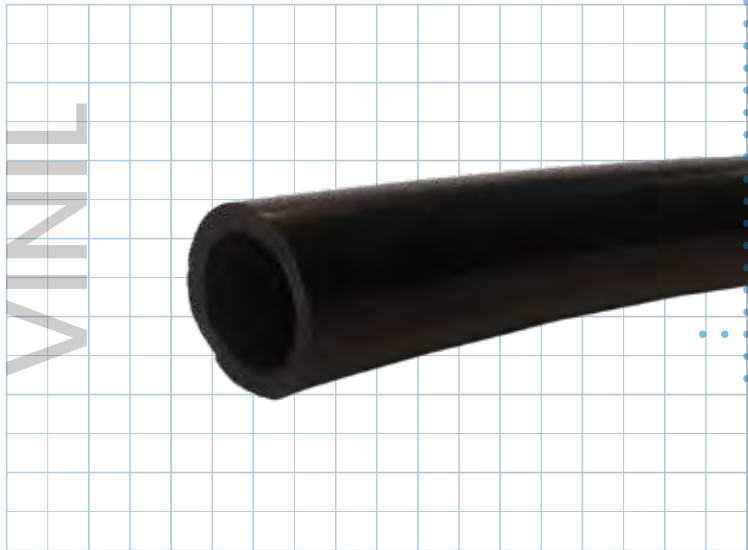
**Smooth inner and corrugated outer surface**

**Working temperature:**  
from -40°F to 149°F

**Bending radius**  
4 times its interior diameter.

**Vacuum pressure**  
0.8 to 0.9 ATM = 24 to 27 in Hg

Product Code	Commercial Size in	Interior Diameter mm	Working pressure		Length	
			kg/cm <sup>2</sup> (BAR)	lb/ft <sup>2</sup> (PSI)	m	ft
AL53CEN011203000	1 1/2	38.1	2	29	15 / 30	50 / 100
AL53CEN020003000	2	50.8	2	29	15 / 30	50 / 100
AL53CEN021203000	2 1/2	63.5	2	29	15 / 30	50 / 100
AL53CEN030003000	3	76.2	2	29	15 / 30	50 / 100
AL53CEN040003000	4	101.6	2	29	15 / 30	50 / 100
AL53CEN050002000	5	127.0	2	29	10 / 20	30 / 60



## VINIL

Code: AL54  
Line Color: Black

Tolerance: +/- 3%

Specifications and product presentations are subject to change without prior notice.

## Characteristics

Flexible hose made of a single layer of PVC, designed for conveying fluids at low pressure.

## Application

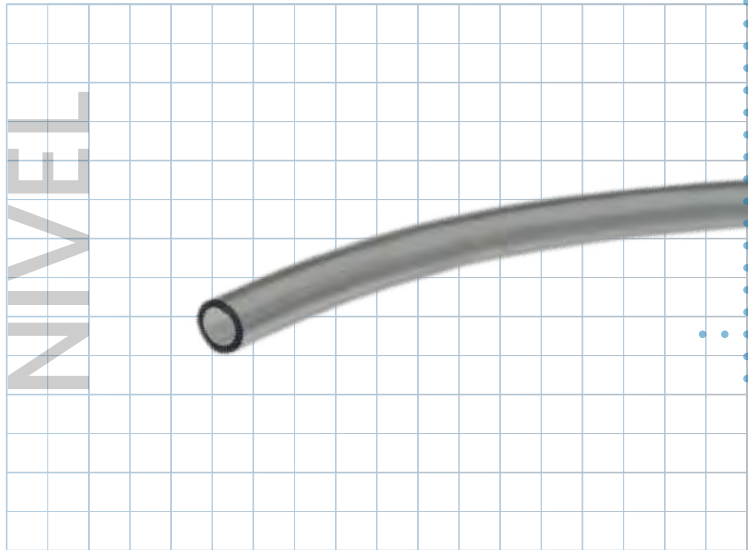
- Conveyance of non-abrasive fluids.
- Discharge hose; suction use poses a risk to the user.

## Technical Information

Smooth internal surface

Working temperature:  
from 23°F to 140°F

Product Code	Commercial Size in	Interior Diameter mm		Length	
		min	max	m	ft
AL54NEG003805000	3/8	9.1	9.7	20 / 50	15 / 30
AL54NEG001205000	1/2	12.2	13.0	20 / 50	15 / 30
AL54NEG005805000	5/8	15.2	16.2	20 / 50	15 / 30
AL54NEG003405000	3/4	18.3	19.4	20 / 50	15 / 30
AL54NEG010005000	1	24.4	25.9	20 / 50	15 / 30



## NIVEL

Code: AL55  
Line Color: Crystal blue

Tolerance: +/- 3%

Specifications and product presentations are subject to change without prior notice.

### Characteristics

Lightweight, flexible hose made of a single layer of transparent PVC, allowing for level measurement.

### Application

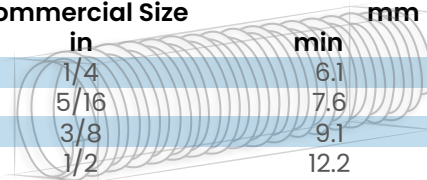
- Used in construction to mark heights at the same level where needed.
- For measuring radiuses.

## Technical Information

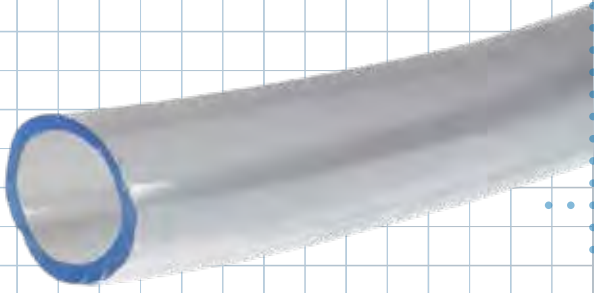
Smooth internal surface

**Working temperature:**  
From 23°F to 140°F

Product Code	Commercial Size in	Interior Diameter mm		Length	
		min	max	m	ft
AL55CAZ001410000	1/4	6.1	6.5	100	330
AL55CAZ051610000	5/16	7.6	8.1	100	330
AL55CAZ003810000	3/8	9.1	9.7	100	330
AL55CAZ001210000	1/2	12.2	13.0	100	330



## INDUSTRIAL



Code: AL56  
 Line Color: Crystal

### Characteristics

Flexible, single-layer transparent PVC hose designed for low-pressure fluid transfer, resistant to outdoor use.

### Application

- Fluid transfer for non-abrasive substances.
- Discharge hose; suction use is at the user's risk.

Tolerance: +/- 3%

Specifications and product presentations are subject to change without prior notice.

## Technical Information

Smooth internal surface

Working temperature:  
 From 23°F to 140°F

Product Code	Commercial Size in	Interior Diameter mm		Length	
		min	max	m	ft
AL56CRI031610000	3/16	4.6	4.9	100	330
AL56CRI001410000	1/4	6.1	6.5	100	330
AL56CRI051610000	5/16	7.6	8.1	100	330
AL56CRI003810000	3/8	9.1	9.7	100	330
AL56CRI001210000	1/2	12.2	13.0	100	330
AL56CRI005810000	5/8	15.2	16.2	100	330
AL56CRI003410000	3/4	18.3	19.4	100	330
AL56CRI010010000	1	24.4	25.9	100	330
AL56CRI011405000	1 1/4	30.5	32.4	50	175
AL56CRI011205000	1 1/2	36.6	38.9	50	175
AL56CRI020005000	2	48.8	51.8	50	175



## INDUSTRIAL ATÓXICA



Code: AL57  
Line Color: Crystal

Tolerance: +/- 3%

Specifications and product presentations are subject to change without prior notice.

### Normative References

**FDA** - Code of Federal Regulations  
**(CFR)** Title 21, Parts 175.300, 177.1210, and 178.2010.

### Characteristics

A flexible, single-layer transparent PVC hose that allows for visual confirmation of the fluid, designed for low-pressure fluid transfer, and resistant to outdoor use.

### Application

- Transport of non-abrasive fluids.
- Discharge hose: suction use is at the user's risk.
- Food-grade hose.

## Technical Information

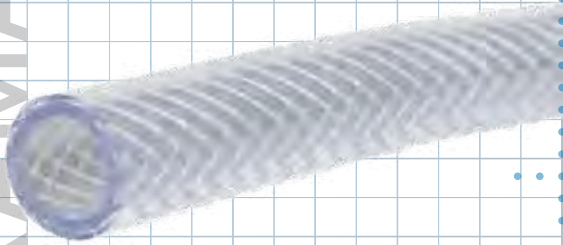
Smooth internal surface

**Working temperature:**  
From 23°F to 140°F

Product Code	Commercial Size in	Interior Diameter mm		Length	
		min	max	m	ft
AL57CRI031610000	3/16	4.6	4.9	100	330
AL57CRI001410000	1/4	6.1	6.5	100	330
AL57CRI051610000	5/16	7.6	8.1	100	330
AL57CRI003810000	3/8	9.1	9.7	100	330
AL57CRI001210000	1/2	12.2	13.0	100	330
AL57CRI005810000	5/8	15.2	16.2	100	330
AL57CRI003410000	3/4	18.3	19.4	100	330
AL57CRI010010000	1	24.4	25.9	100	330
AL57CRI011405000	1 1/4	30.5	32.4	50	175
AL57CRI011205000	1 1/2	36.6	38.9	50	175
AL57CRI02000500	2	48.8	51.8	50	175

# INDUSTRIAL TRAMADA

## INDUSTRIAL TRAMADA



Code: AL58  
Line Color: Crystal

Tolerance: +/- 3%

Specifications and product presentations are subject to change without prior notice.

### Characteristics

Flexible hose with three layers: Inner layer: PVC, Intermediate layer: Reinforced with threads, Outer layer: Transparent PVC, allowing for visual confirmation of the fluid. Designed for medium-pressure fluid conveyance and resistant to outdoor use.

### Application

- Conveyance of non-abrasive fluids.
- Discharge hose; suction use is at the user's risk.

## Technical Information

Smooth internal surface

Working temperature:  
From 23°F to 140°F

Product Code	Commercial Size in	Interior Diameter mm		Length	
		min	max	m	ft
AL58CRI001410000	1/4	6.1	6.5	100	330
AL58CRI051610000	5/16	7.6	8.1	100	330
AL58CRI003810000	3/8	9.1	9.7	100	330
AL58CRI001210000	1/2	12.2	13.0	100	330
AL58CRI005810000	5/8	15.2	16.2	100	330
AL58CRI003410000	3/4	18.3	19.4	100	330
AL58CRI010010000	1	24.4	25.9	100	330
AL58CRI011405000	1 1/4	30.5	32.4	50	175
AL58CRI011205000	1 1/2	36.6	38.9	50	175
AL58CRI02000500	2	48.8	51.8	50	175

# INDUSTRIAL TRAMADA ATÓXICA

## INDUSTRIAL TRAMADA ATÓXICA

Code: AL59  
Line Color: Crystal

Tolerance: +/- 3%

Specifications and product presentations are subject to change without prior notice.

### Normative References

**FDA** - Code of Federal Regulations  
**(CFR)** Title 21, Parts 175.300, 177.1210, and 178.2010

### Characteristics

Flexible three-layer hose: internal layer of PVC, middle layer of thread, and external layer of transparent PVC for visual confirmation of the fluid. Designed for conveying fluids under medium pressure and resistant to outdoor use.

### Application

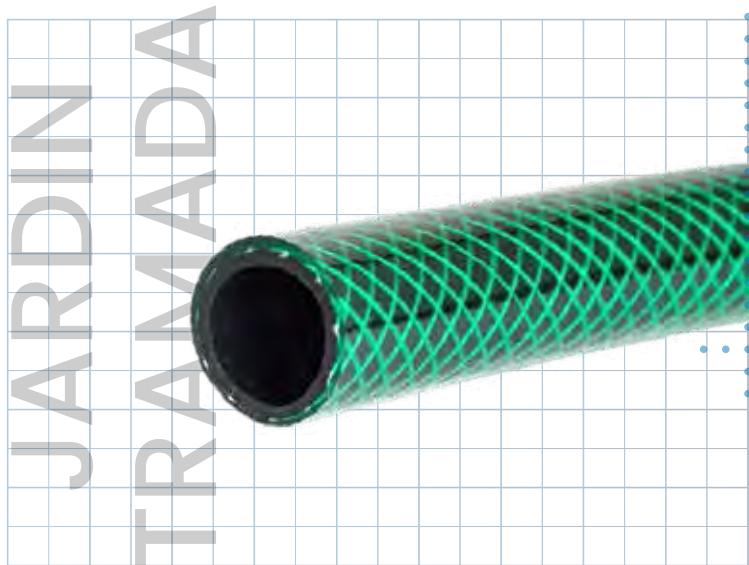
- Conveyance of non-abrasive fluids.
- Discharge hose; suction use is at the user's risk.
- Food-grade hose.

## Technical Information

Smooth internal surface

**Working temperature:**  
From 23°F to 140°F

Product Code	Commercial Size in	Interior Diameter mm		Length	
		min	max	m	ft
AL59CRI001410000	1/4	6.1	6.5	100	330
AL59CRI051610000	5/16	7.6	8.1	100	330
AL59CRI003810000	3/8	9.1	9.7	100	330
AL59CRI001210000	1/2	12.2	13.0	100	330
AL59CRI005810000	5/8	15.2	16.2	100	330
AL59CRI003410000	3/4	18.3	19.4	100	330
AL59CRI010010000	1	24.4	25.9	100	330
AL59CRI011405000	1 1/4	30.5	32.4	50	175
AL59CRI011205000	1 1/2	36.6	38.9	50	175
AL59CRI02000500	2	48.8	51.8	50	175



## JARDIN TRAMADA

Code: AL60  
Line Color: Green

Tolerance: +/- 3%

Specifications and product presentations are subject to change without prior notice.

### Characteristics

Flexible hose with three layers: inner PVC, middle textile reinforcement, and outer PVC.

### Application

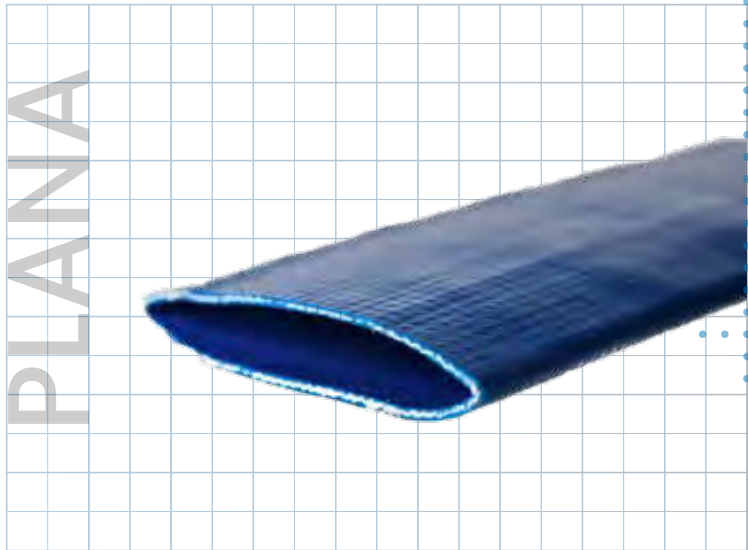
- Domestic or professional use in gardening
- Supply lines for irrigation
- To increase the hose's durability, it is advised not to leave it exposed to direct sunlight after use.

## Technical Information

Smooth internal surface

Working temperature:  
From 23°F to 140°F

Product Code	Commercial Size in	Interior Diameter mm		Length	
		min	max	m	ft
AL60VER001210000	1/2	12.2	13.0	100	330
AL60VER005810000	5/8	15.2	16.2	100	330
AL60VER003410000	3/4	18.3	19.4	100	330
AL60VER010010000	1	24.4	25.9	100	330
AL60VER011405000	1 1/4	30.5	32.4	50	175
AL60VER011205000	1 1/2	36.6	38.9	50	175
AL60VER02000500	2	48.8	51.8	50	175



## PLANA

Code: AL61  
Line Color: Blue

Tolerance: +/- 3%

Specifications and product presentations are subject to change without prior notice.

### Application

- Irrigation of crops
- Water discharge

### Characteristics

Hose made from PVC with ultraviolet inhibitors that reduce aging and environmental damage.

Resistance to corrosion and degradation from environmental factors.

High flexibility at low temperatures.

Easy to transport and connect.

High-tensile textile reinforcement and a blue thermoplastic hose cover.

## Technical Information

Smooth internal surface

Working temperature:  
From 14°F to 122°F

Product Code	Commercial Size in	Interior Diameter mm	Working pressure		Length	
			kg/cm <sup>2</sup> (BAR)	lb/ft <sup>2</sup> (PSI)	m	ft
AL61AZL015010000	1 1/2	38.1	100	330	100	330
AL61AZL020010000	2	51.0	100	330	100	330
AL61AZL030010000	3	76.0	100	330	100	330
AL61AZL040010000	4	102.0	100	330	100	330
AL61AZL060010000	6	152.0	100	330	100	330
AL61AZL080005000	8	200.0	50	175	50	175



# CONECTORES ELÉCTRICOS

## CONECTORES ELÉCTRICOS

Code: AL62  
Line Color: Gray

### Characteristics


Resistance to corrosion and degradation from environmental factors, ease of transport and coupling


### Application


- Connection with electrical hoses for electrical installations

### Technical Information

- **Working temperature:**  
From -50°F to 122°F

90°		UL	Product Code	Commercial Size	Interior Diameter	Theoretical weight	
				in	mm	g/m	lb/ft
			ALC01GRI0038	3/8	12.80	90	0.17
			ALC01GRI0012	1/2	16.30	140	0.28
			ALC01GRI0034	3/4	21.30	190	0.39
			ALC01GRI0100	1	27.10	320	0.68
			ALC01GRI0114	1 1/4	35.80	400	0.85
			ALC01GRI0112	1 1/2	40.60	460	0.99
			ALC01GRI0200	2	51.90	520	1.12

Recto		UL	Product Code	Commercial Size	Interior Diameter	Theoretical weight	
				in	mm	g/m	lb/ft
			ALC02GRI0038	3/8	12.80	80	0.17
			ALC02GRI0012	1/2	16.30	130	0.28
			ALC02GRI0034	3/4	21.30	180	0.39
			ALC02GRI0100	1	27.10	310	0.68
			ALC02GRI0114	1 1/4	35.80	390	0.85
			ALC02GRI0112	1 1/2	40.60	450	0.99
			ALC02GRI0200	2	51.90	510	1.12

Normal			Product Code	Commercial Size	Interior Diameter	Theoretical weight	
				in	mm	g/m	lb/ft
			ALC03GRI0012	1/2	15.80	70	0.15
			ALC03GRI0058	5/8	17.60	120	0.26
			ALC03GRI0034	3/4	20.80	170	0.37
			ALC03GRI0078	7/8	23.60	290	0.63
			ALC03GRI0100	1	26.40	400	0.88
			ALC03GRI0114	1 1/4	35.10	480	1.05
			ALC03GRI0112	1 1/2	40.00	520	1.14
			ALC03GRI0200	2	51.30	590	1.30